

# Communicating the Value of Immunization Information Systems (IIS)

A Template for Program Managers



Association of  
Immunization  
Managers

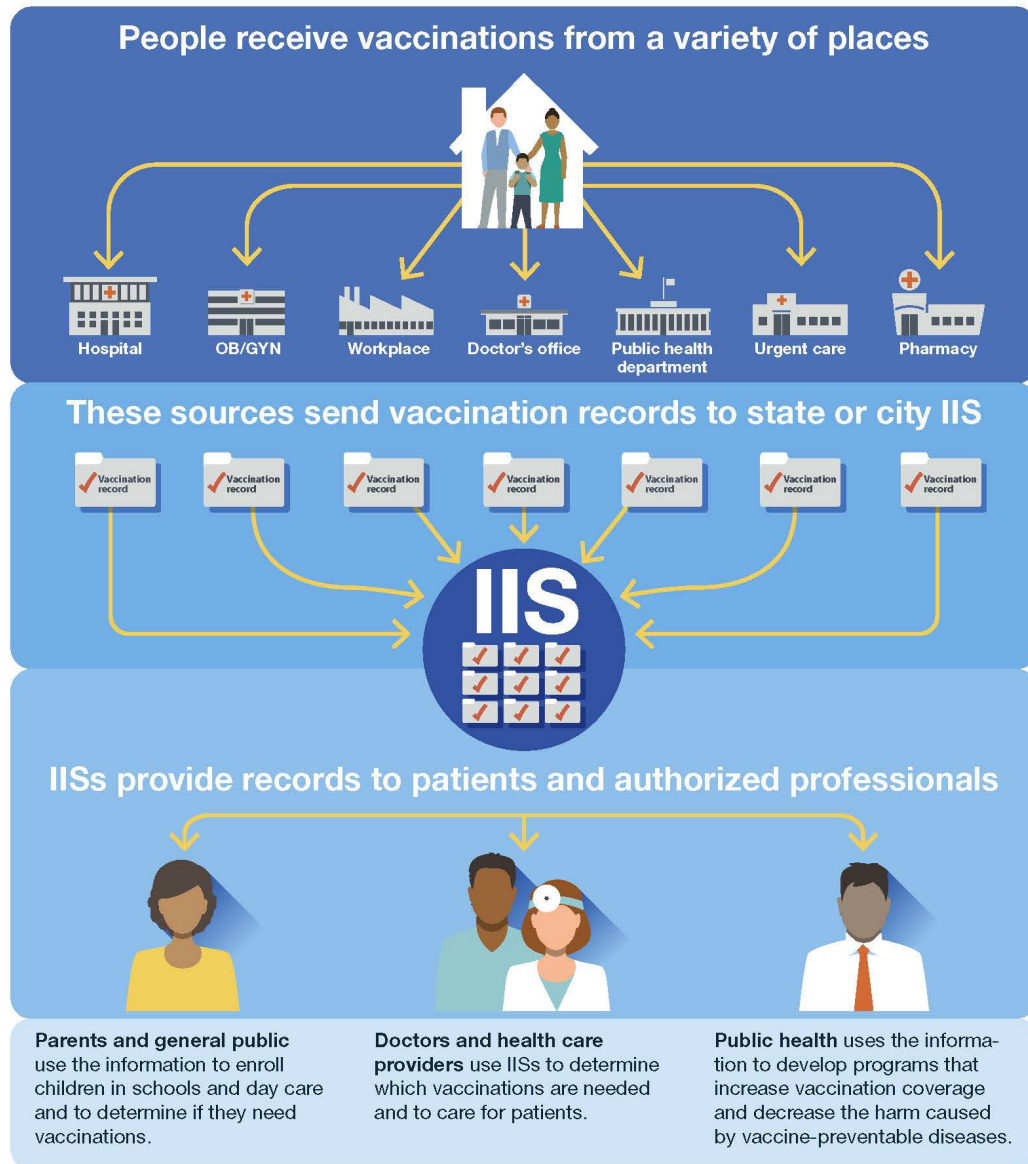
# Using this Slide Deck

- The following slides are meant to be used as a template for you when talking or presenting about the IIS.
- You are free to use and edit the content as you wish!
- Additional information is contained within the slide notes for easy reference.

# Agenda

- Overview of IIS
- IIS Data
- Value Proposition
- Sustainability

## Basics of Immunization Information Systems (IISs)



# Overview of IIS

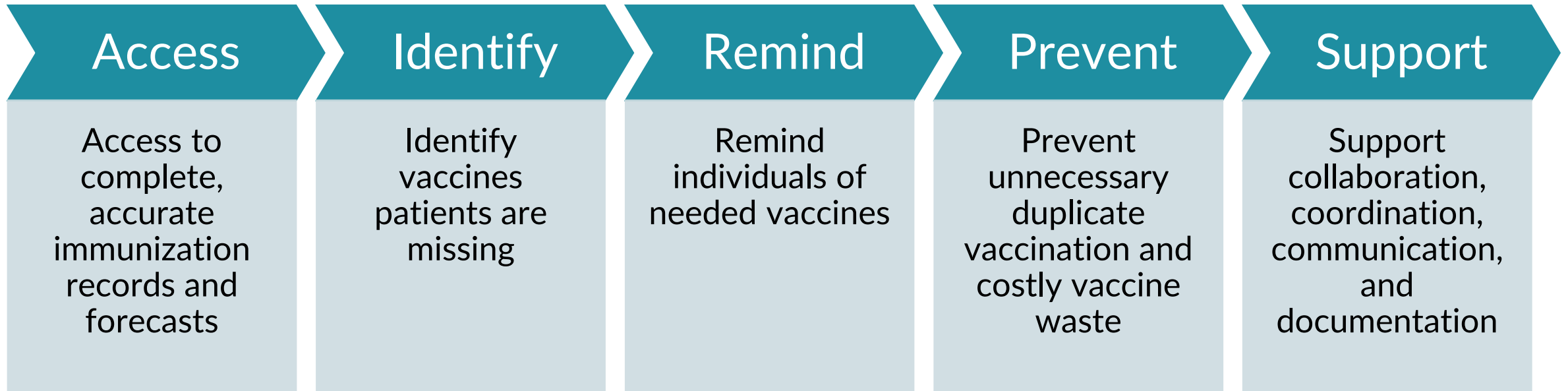
- Confidential, population-based, computerized database
- Records all immunization doses administered by participating providers to persons residing within a given area
- Creates a consolidated record of an individual's immunization history
- Exchanges data with multiple authorized providers and partners, including across jurisdictions

Distributed by:



U.S. Department of  
Health and Human Services  
Centers for Disease  
Control and Prevention

# Benefits of IIS



# [Name of IIS] Data



# Immunizations

X Total

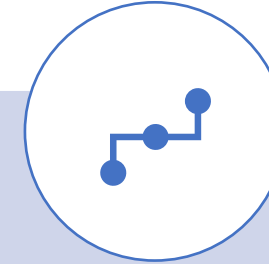
X Medicaid



# Individuals

X Total

X Medicaid

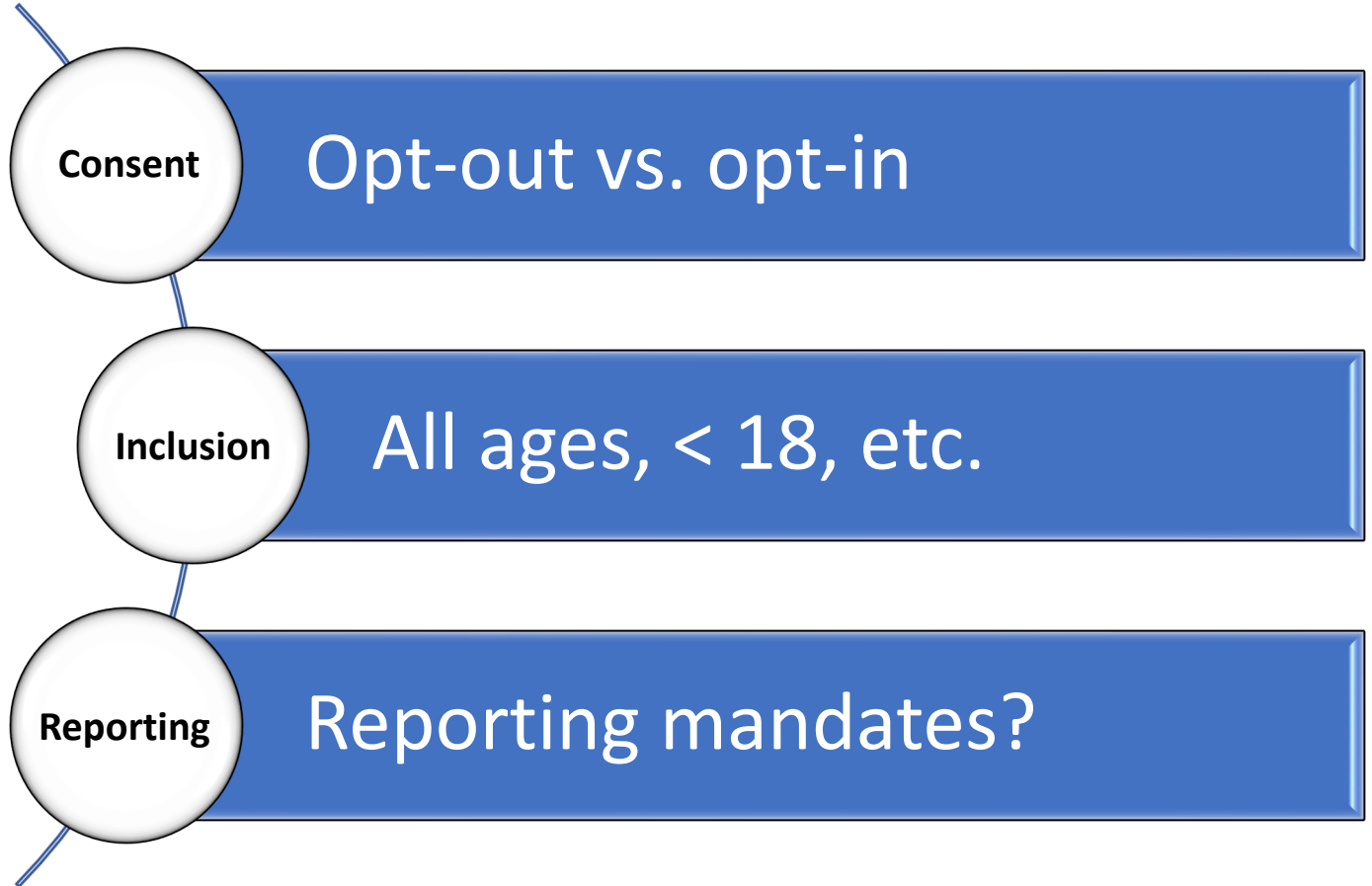


# Connections

X Total

X Bi-  
directional

# [Name of IIS] Data



# [Name of IIS] Coverage Rates

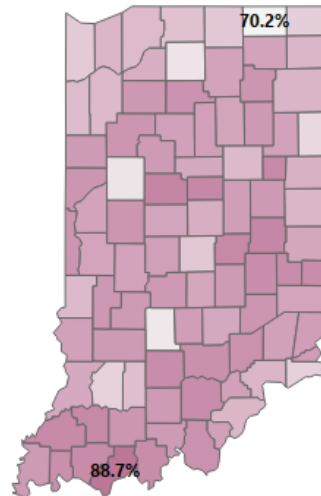


## Adolescent 13-18 year old Coverage rate, Indiana as of March 31st, 2023

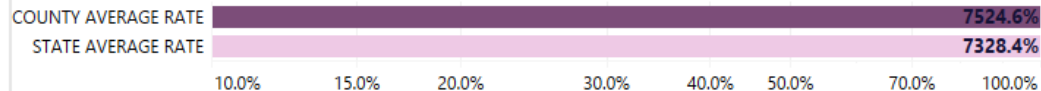
### Adolescent 13 to 18-year-old coverage rate averages by county, Indiana, as of March 31st, 2023

Click on any county on the map to locate its corresponding average coverage rate in the horizontal bar chart below the map. The individual antigen rates for that county will appear on the right of the dashboard. To see the full-colored map again, click anywhere in the white space outside of the state boundary.

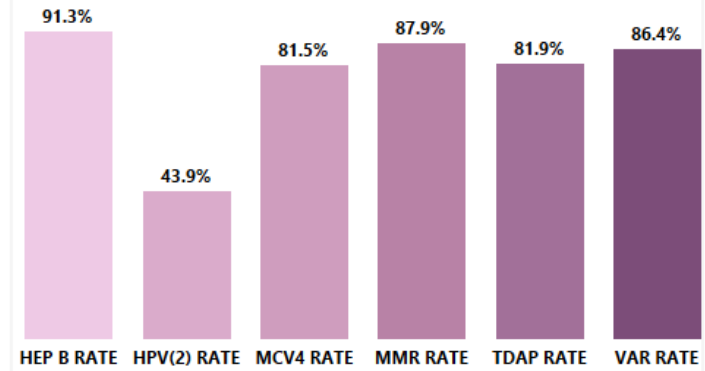
The darker the color of the county, the higher the rate. The lighter the color, the lower the rate.



### Total Average Rate for Selected County



### INDIANA





# Value Proposition



**ENHANCED  
REPORTING**



**ACCURATE  
COVERAGE RATES**



**IMPROVED DATA  
QUALITY &  
COMPLETENESS**



**DATA  
VISUALIZATION AND  
ANALYTICS**

# Sustainability

- ✓ Shared workforce
- ✓ Less training
- ✓ Data resiliency
- ✓ Contingency planning





## Financial Benefits

- ✓ Performance-based payments
- ✓ HEDIS reporting
- ✓ Evidence-based strategies
- ✓ Quality measures

# Reducing the Burden of Disease



## Vaccination Reminder & Recall Systems

Proactive outreach strategies

Reduce the likelihood of outbreaks and minimize the burden of vaccine-preventable diseases



## Targeted Public Health Interventions

Identify high-risk populations and areas with low immunization rates

Identify high-risk communities or groups

Improve immunization rates in vulnerable communities

**Thank you!**

**Questions?**

**[enter contact  
information]**