

Table 1 - City Demographics

Data updated May 2023

	Demographic	Total Number	% of Population
Age	Total Population	1,576,251	100%
	Under 5 y/o	96,086	6.1%
	Between 5 and 17 y/o	243,983	15.5%
	Total under 18 y/o	340,069	21.6%
Race	American Indian/Alaska Native	2,115	0.1%
	Asian	117,519	7.5%
	Black/African American	608,357	38.6%
	Hispanic/Latino	250,485	15.9%
	Native Hawaiian/Pacific Islander	270	0.02%
	Other	13,955	0.9%
	White	520,349	33.0%
	2+ Races	63,201	4.0%
Other	Total households	660,921	100%
	Households with broadband	573,184	86.7%
	Persons in poverty	-	22.8%
	Children in households below poverty level	-	34.2%
	Language besides English (>5 y/o)	353,745	23.9%
	Uninsured children (<18 y/o)	13,399	3.9%
	Children on Medicaid (<19 y/o)	215,252	63.3%
	Children with private insurance (<19 y/o)	164,892	48.5%
	Children with a disability (<18 y/o)	25,137	7.4%
	Population per square mile	11,936.9	-

Age data taken from U.S. Census Bureau - [ACS S0101: Age and Sex](#)

Race data taken from U.S. Census Bureau - [ACS B03002: Hispanic or Latino Origin by Race](#)

Household, language, and disability data taken from U.S. Census Bureau - [ACS DP02: Selected Social Characteristics in the United States](#)

Poverty, uninsured, and other data taken from U.S. Census Bureau - [ACS S0901: Children Characteristics](#), [ACS S2701: Selected Characteristics of Health Insurance Coverage in the United States](#), and [QuickFacts: Philadelphia](#)

Private insurance and Medicaid data taken from [ACS S2703: Private Health Insurance Coverage by Type and Selected Characteristics](#) and [ACS S2704: Public Health Insurance Coverage by Type and Selected Characteristics](#)

Table 2 - Tribal Nations

Data updated May 2023

	Total Tribes Represented	Total Population
American Indian Tribes	21+	3,966
Alaska Native Tribes	4+	43
Two or more Tribes	-	234
Unspecified Tribes	-	767
Total Tribes	25+	5,010*

Note that the above table shows Tribes represented in U.S. Census data. There are no federally recognized or state recognized Tribes in Pennsylvania.

*This value may differ slightly from the value in Table 1 due to an expected margin of error

Tribal data taken from U.S. Census Bureau - [ACS B02014: American Indian and Alaska Native Alone for Selected Tribal Groupings](#) and indianaffairs.gov

Table 3 - COVID-19 Vaccination Rates

Data updated May 21, 2023

Note that data represents the state of Pennsylvania

	% with 1+ dose	% with 2 dose series	% change in 4 weeks
6 mo.-4 y/o	17%	-	1%
5-11 y/o	44%	36%	0%
12-17 y/o	71%	58%	0%

Data taken from [AAP - Children and COVID-19 Vaccination Trends](#)

Table 4 - Pharmacist Authority to Deliver Vaccines Outside of PREP Act

Data updated May 2023

COVID-19: Federal PREP Act allows all pharmacists, pharmacy technicians, and pharmacy interns to administer routine childhood vaccinations and COVID-19 vaccines to all children 3 and older, and the influenza vaccine to those age 19 and older. More info can be found at naspa.us/resource/federal-prep-act-actions/

	Influenza	COVID-19
With a patient-specific prescription	Can administer to age 5+	Can administer to age 5+
Without a prescription	Can administer to age 5+	Can administer to age 5+

Can pharmacy technicians administer vaccinations in Pennsylvania outside of PREP? No

Data taken from the [National Alliance of State Pharmacy Associations](#) and the [American Disease Prevention Coalition](#)

Table 5 - School Vaccine Requirements for Kindergarten Enrollment

Data updated May 2023

	DTap	IPV	MMR	Hep A	Hep B	Varicella	PCV	HiB	COVID
Required	✓	✓	✓		✓	✓			

Data taken from vaccines.procon.org and [Philadelphia Department of Public Health](https://www.phila.gov)

Table 6 - Vaccine Coverage and Exemption Rates Among Children in Kindergarten

Data updated May 2023

	Pennsylvania	Median	National
Kindergarten Population	139,558	-	3,837,259
Surveyed %	94.9	-	92.2
2 Doses MMR %	95.0	92.9	93.5
5 Doses DTaP %	95.4	92.0	93.1
4 Doses Polio %	95.1	92.7	93.5
2 Doses VAR %	94.8	92.6	92.8
Grace Period of Provisional Enrollment %	NR	1.9	2.4
Any Exemption %	3.3	2.7	2.6
Percentage point change in any exemption 2020-2021	0.6	0.2	0.4

Data taken from [CDC MMWR Weekly Report](https://www.cdc.gov/mmwr)

Per-Dose Vaccine Administration Fee For Medical Providers

Data updated May 2023

This graph represents the range of administration fees across states. Minimum, maximum, and median calculations taken from the 45 states where data was available.



Data taken from [PA Vaccines for Children Provider Manual](https://www.pa.gov)

Other Details

- Is Pennsylvania a Medicaid Expansion state?
 - Yes
- Is Pennsylvania currently enrolling pharmacies in VFC?
 - No
- Are pharmacies recognized as Medicaid providers?
 - No
- Number of school-based clinics
 - 0
- Universal VFC jurisdiction?
 - No
- Legislative considerations
 - Permits religious and philosophical belief vaccination exemptions
 - No bans on student COVID-19 vaccine mandates
 - No requirements for student COVID-19 vaccination
 - Minors may consent to medical care if an attempt to receive consent from a parent or guardian would result in a delay of treatment and increase risk to the minor's life or health. Minors age 12 and older may consent to vaccination without parental consent
- Logistical considerations
 -
- Opportunities
 - School-located vaccination

Sources:

- [The School District of Philadelphia](#)
- [KFF - Status of State Medicaid Expansion Decisions: Interactive Map](#)
- [NASHP - States Address School Vaccine Mandates and Mask Mandates](#)
- [SchoolHouse Connection - State Laws on Minor Consent to Routine Medical Care](#)
- [Philadelphia Immunization Program](#)

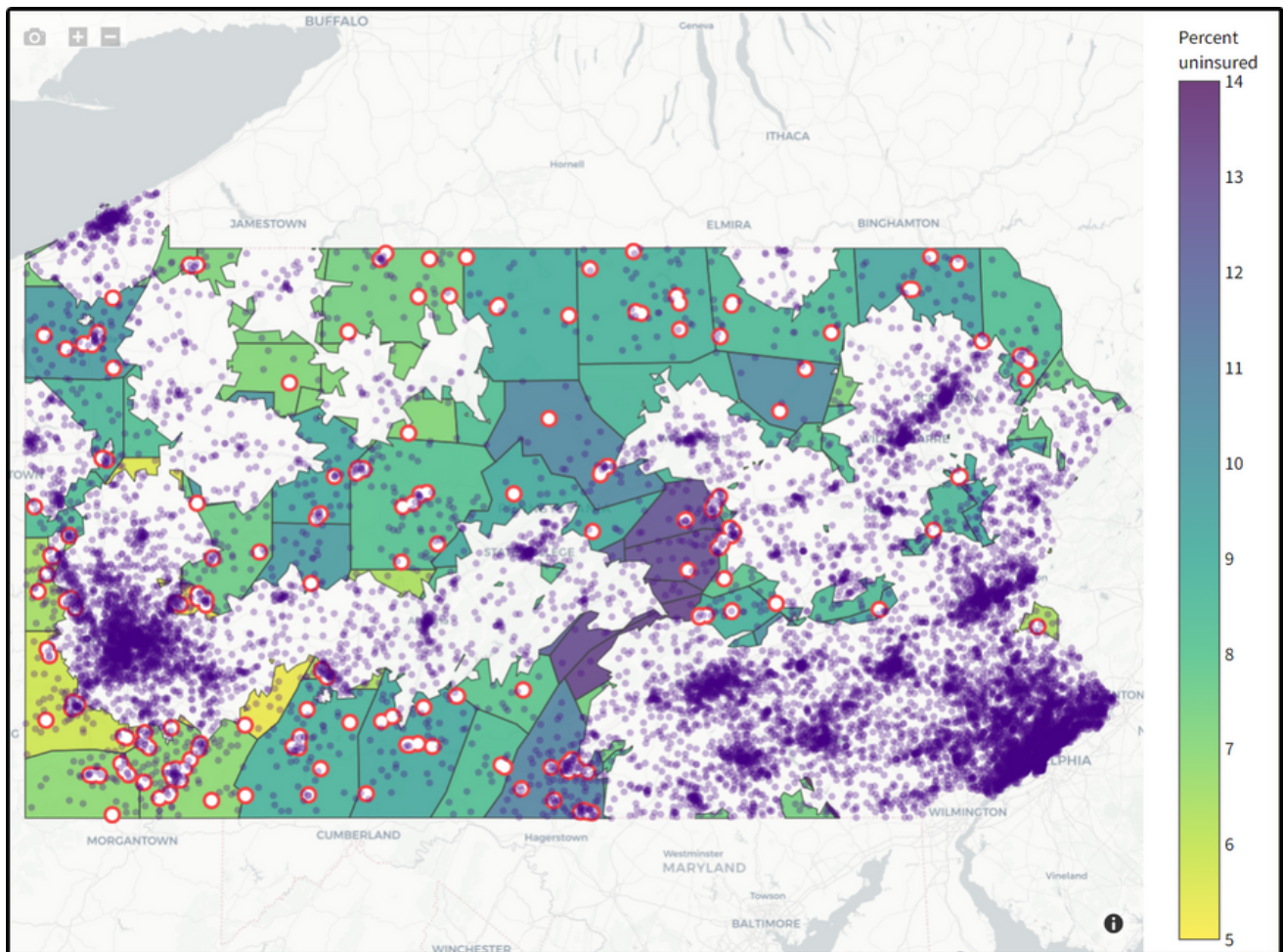
Maps

Details on marked locations can be found on vaccineplanner.org

Pharmacies Not Currently Providing COVID-19 Vaccines to Children Under Five

Data updated May 2023

Total: Pennsylvania - 266; Philadelphia - 0



Data taken from vaccineplanner.org.

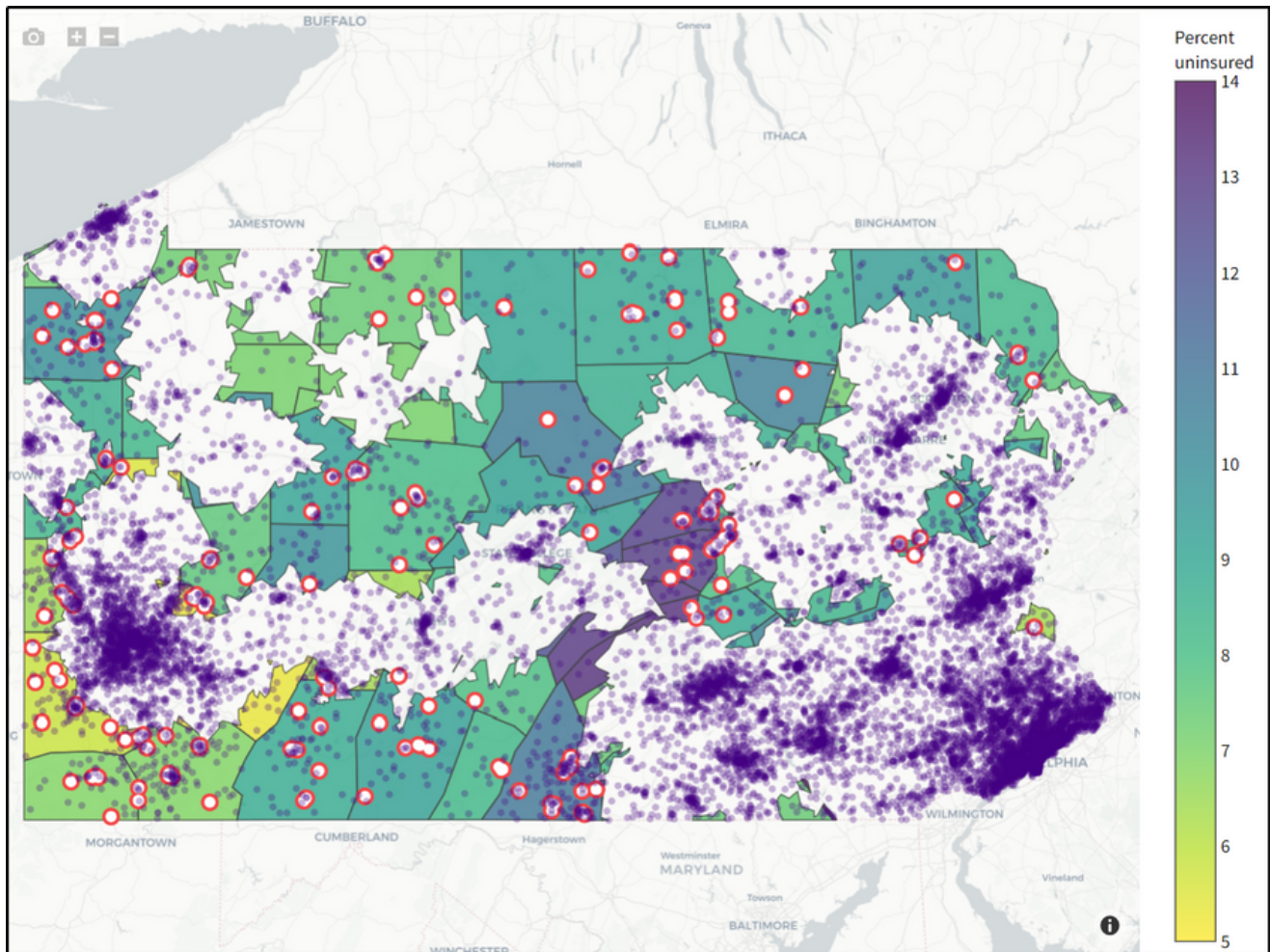
Data parameters:

- Children between the ages of six months and five years
- Those living in low, moderate, or high social vulnerability (based on the [CDC's Social Vulnerability Index \(SVI\)](#))
- Shaded by percent without health insurance
- Drive time of 30 minutes or more to the nearest COVID-19 vaccination site
- Purple dots each represent a population of 1,000 people

Pediatric and Family Medicine Practices Not Currently Providing COVID-19 Vaccines to Children Under Five

Data updated May 2023

Total: Pennsylvania - 247; Philadelphia - 0



Data taken from vaccineplanner.org.

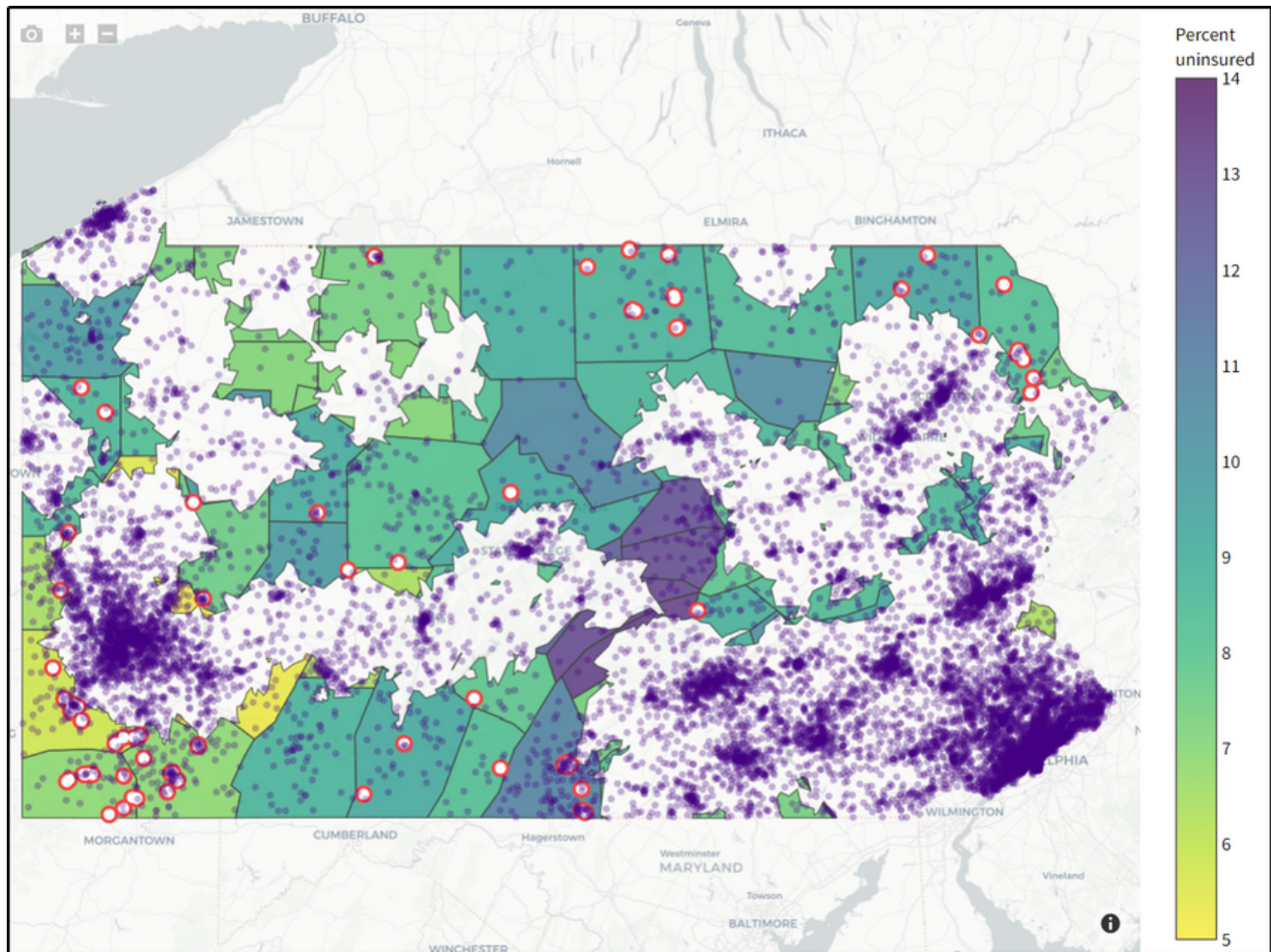
Data parameters:

- Children between the ages of six months and five years
- Those living in low, moderate, or high social vulnerability (based on the [CDC's Social Vulnerability Index \(SVI\)](#))
- Shaded by percent without health insurance
- Drive time of 30 minutes or more to the nearest COVID-19 vaccination site
- Purple dots each represent a population of 1,000 people

Federally Qualified Health Practices Not Currently Providing COVID-19 Vaccines to Children Under Five

Data updated May 2023

Total: Pennsylvania - 99; Philadelphia - 0



Data taken from vaccineplanner.org.

Data parameters:

- Children between the ages of six months and five years
- Those living in low, moderate, or high social vulnerability (based on the [CDC's Social Vulnerability Index \(SVI\)](#))
- Shaded by percent without health insurance
- Drive time of 30 minutes or more to the nearest COVID-19 vaccination site
- Purple dots each represent a population of 1,000 people