

Table 1 - State Demographics

Data updated April 2023

	Demographic	Total Number	% of Population
Age	Total Population	6,168,187	100%
	Under 5 y/o	353,946	5.7%
	Between 5 and 17 y/o	1,029,591	16.7%
	Total under 18 y/o	1,383,537	22.4%
Race	American Indian/Alaska Native	13,313	0.2%
	Asian	122,872	2.0%
	Black/African American	661,189	10.7%
	Hispanic/Latino	281,445	4.6%
	Native Hawaiian/Pacific Islander	6,693	0.1%
	Other	30,812	0.5%
	White	4,722,344	76.6%
	2+ Races	329,519	5.3%
Other	Total households	2,468,726	100%
	Households with broadband	2,184,165	88.5%
	Persons in poverty	-	12.7%
	Children in households below poverty level	-	16.1%
	Language besides English (>5 y/o)	346,889	6.0%
	Uninsured children (<18 y/o)	85,621	6.2%
	Children on Medicaid (<19 y/o)	492,459	35.6%
	Children with private insurance (<19 y/o)	958,089	69.2%
	Children with a disability (<18 y/o)	66,562	4.8%
	Population per square mile	89.5	-

Age data taken from U.S. Census Bureau - [ACS S0101: Age and Sex](#)

Race data taken from U.S. Census Bureau - [ACS B03002: Hispanic or Latino Origin by Race](#)

Household, language, and disability data taken from U.S. Census Bureau - [ACS DP02: Selected Social Characteristics in the United States](#)

Poverty, uninsured, and other data taken from U.S. Census Bureau - [ACS S0901: Children Characteristics](#), [ACS S2701: Selected Characteristics of Health Insurance Coverage in the United States](#), and [QuickFacts: Missouri](#)

Private insurance and Medicaid data taken from [ACS S2703: Private Health Insurance Coverage by Type and Selected Characteristics](#) and [ACS S2704: Public Health Insurance Coverage by Type and Selected Characteristics](#)

Table 2 - Tribal Nations

Data updated April 2023

	Total Tribes Represented	Total Population
American Indian Tribes	37+	15,246
Alaska Native Tribes	5+	180
Two or more Tribes	-	1,056
Unspecified Tribes	-	3,422
Total Tribes	42+	19,904*

Note that the above table shows Tribes represented in U.S. Census data. There is 1 federally recognized Tribe and no state recognized Tribes in Missouri.

*This value may differ slightly from the value in Table 1 due to an expected margin of error

Tribal data taken from U.S. Census Bureau - [ACS B02014: American Indian and Alaska Native Alone for Selected Tribal Groupings](#) and [indianaffairs.gov](#)

Table 3 - COVID-19 Vaccination Rates

Data updated March 1, 2023

	% with 1+ dose	% with 2 dose series	% change in 3 weeks
6 mo.-4 y/o	10%	-	1%
5-11 y/o	29%	23%	0%
12-17 y/o	52%	44%	0%

Data taken from [AAP - Children and COVID-19 Vaccination Trends](#)

Table 4 - Pharmacist Authority to Deliver Vaccines Outside of PREP Act

Data updated April 2023

COVID-19: Federal PREP Act allows all pharmacists, pharmacy technicians, and pharmacy interns to administer routine childhood vaccinations and COVID-19 vaccines to all children 3 and older, and the influenza vaccine to those age 19 and older. More info can be found at [naspa.us/resource/federal-prep-act-actions/](#)

	Influenza	COVID-19
With a patient-specific prescription	Can administer to any age	Cannot administer vaccine
Without a prescription	Can administer to age 7+	Cannot administer vaccine

Can pharmacy technicians administer vaccinations in Missouri outside of PREP? Yes

Data taken from the [National Alliance of State Pharmacy Associations](#) and the [American Disease Prevention Coalition](#)



Table 5 - School Vaccine Requirements for Kindergarten Enrollment

Data updated April 2023

	DTap	IPV	MMR	Hep A	Hep B	Varicella	PCV	HiB	COVID
Required	✓	✓	✓		✓	✓			

Data taken from vaccines.procon.org and [Missouri Department of Health](https://www.mo.gov/health)

Table 6 - Vaccine Coverage and Exemption Rates Among Children in Kindergarten

Data updated April 2023

	Missouri	Median	National
Kindergarten Population	71,034	-	3,837,259
Surveyed %	100.0	-	92.2
2 Doses MMR %	91.6	92.9	93.5
5 Doses DTaP %	91.5	92.0	93.1
4 Doses Polio %	91.9	92.7	93.5
2 Doses VAR %	91.2	92.6	92.8
Grace Period of Provisional Enrollment %	-	1.9	2.4
Any Exemption %	≥3.0	2.7	2.6
Percentage point change in any exemption 2020-2021	0.5	0.2	0.4

Data taken from [CDC MMWR Weekly Report](https://www.cdc.gov/mmwr)

Per-Dose Vaccine Administration Fee For Medical Providers

Data updated April 2023

This graph represents the range of administration fees across states. Minimum, maximum, and median calculations taken from the 45 states where data was available.



Data taken from [Missouri Vaccines for Children Provider Manual](https://www.mo.gov/health)

Other Details

- Is Missouri a Medicaid Expansion state?
 - Yes
- Is Missouri currently enrolling pharmacies in VFC?
 - Missouri is enrolling a select few pharmacies in VFC as part of a pilot program.
- Are pharmacies recognized as Medicaid providers?
 - Yes
- Number of school-based clinics (per CDC)
 - 6
- Universal VFC jurisdiction?
 - No
- Legislative considerations
 - Legislation was introduced to ban requirements for COVID-19 vaccines, any mRNA-based vaccines, and "any mechanical or electronic device that would be placed under the skin." Additional legislation allowing religious and philosophical exemptions to any employer or college vaccination requirement is under consideration in the House
 - No bans on student COVID-19 vaccine mandates
 - No requirements for student COVID-19 vaccination
 - Minors may not consent to routine medical care, including vaccinations
 - Permits medical and religious exemptions from school-required vaccinations
- Logistical considerations
 - Widespread vaccine deserts for children
- Opportunities
 - School-located vaccination
 - Recruit non-vaccinating providers in vaccine deserts

Sources:

- [KFF - Status of State Medicaid Expansion Decisions: Interactive Map](#)
- [NASHP - States Address School Vaccine Mandates and Mask Mandates](#)
- [SchoolHouse Connection - State Laws on Minor Consent to Routine Medical Care](#)
- [Missouri Immunization Program](#)

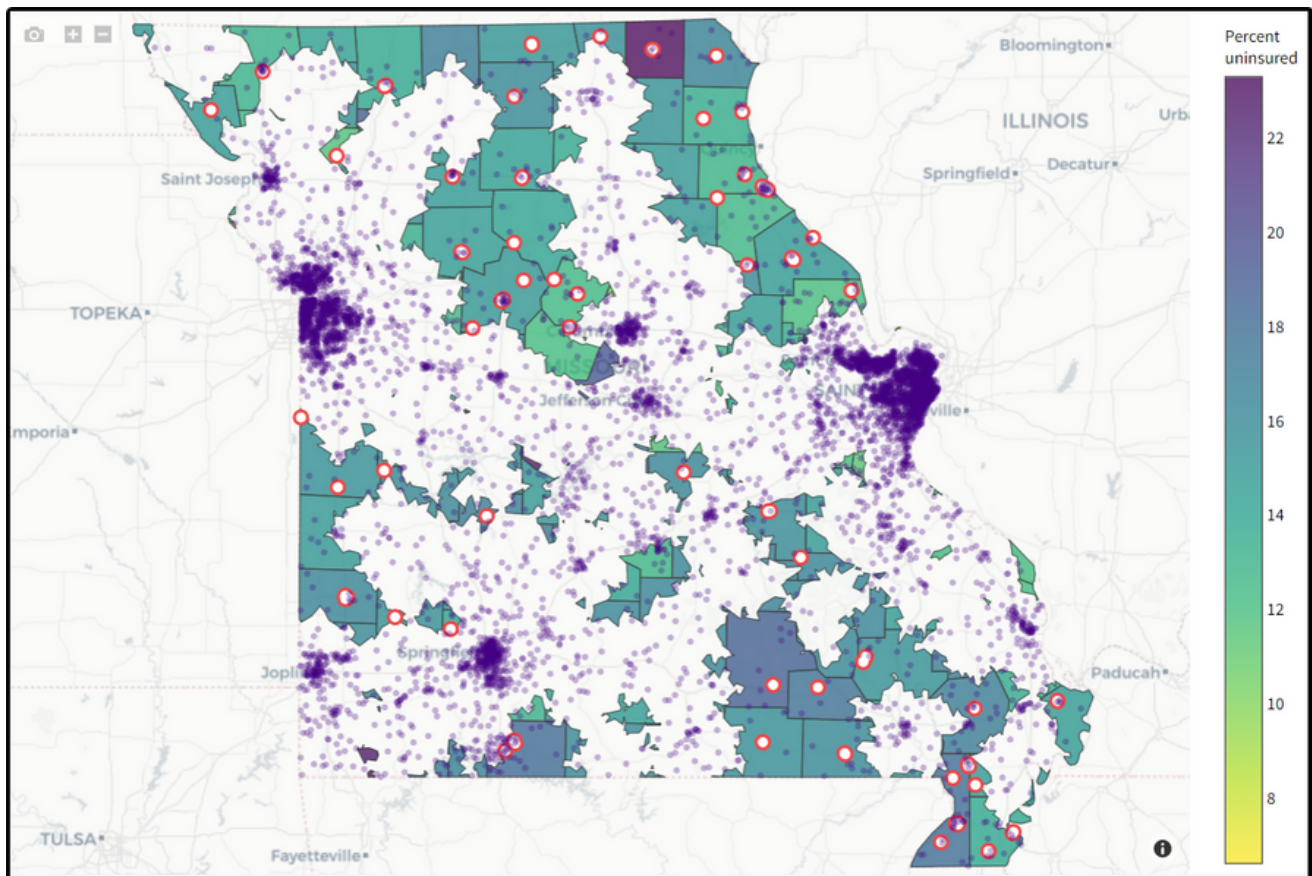
Maps

Details on marked locations can be found on vaccineplanner.org

Pharmacies Not Currently Providing COVID-19 Vaccines to Children Under Five

Data updated April 2023

Total: 87



Data taken from vaccineplanner.org.

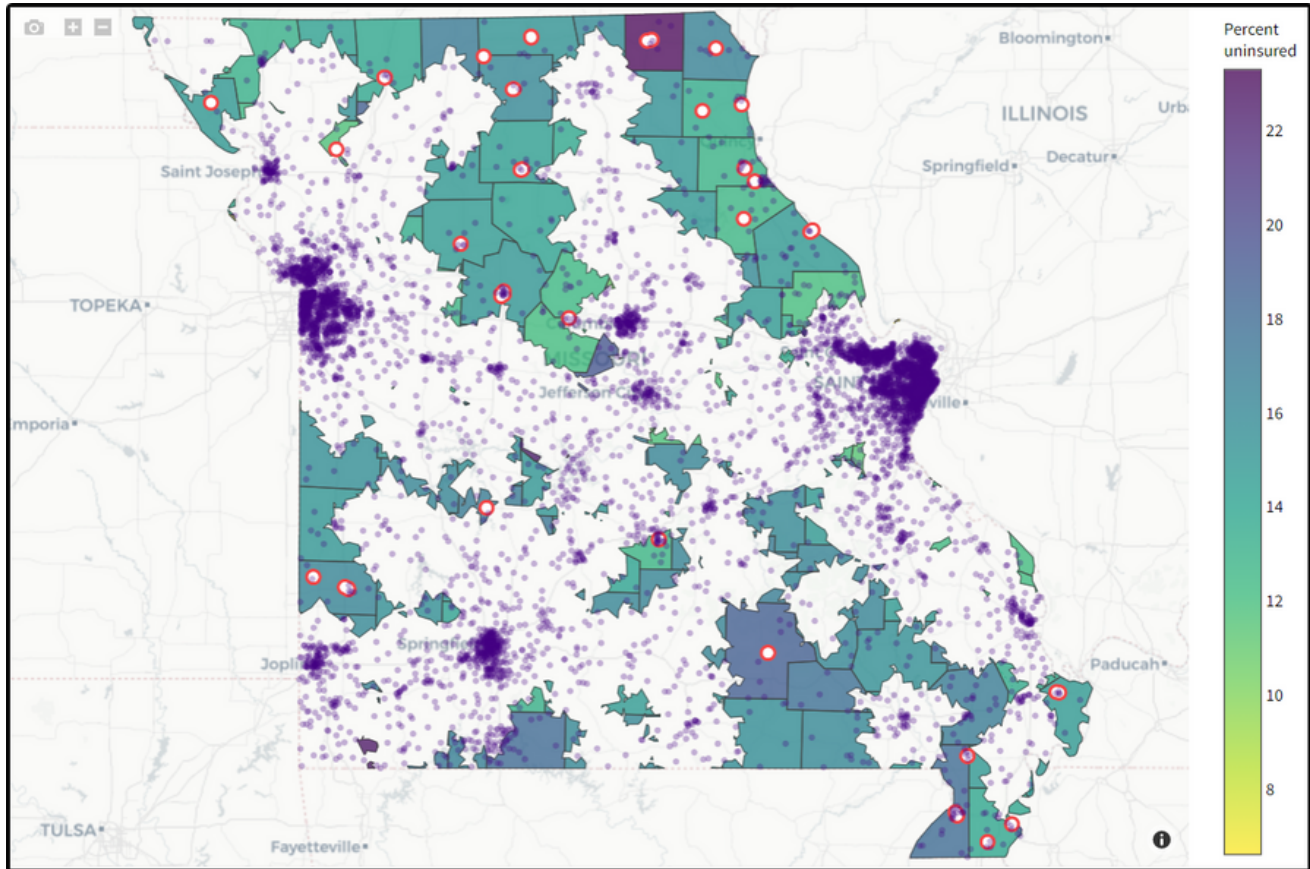
Data parameters:

- Children between the ages of six months and five years
- Those living in low, moderate, or high social vulnerability (based on the [CDC's Social Vulnerability Index \(SVI\)](#))
- Shaded by percent without health insurance
- Drive time of 30 minutes or more to the nearest COVID-19 vaccination site
- Purple dots each represent a population of 1,000 people

Pediatric and Family Medicine Practices Not Currently Providing COVID-19 Vaccines to Children Under Five

Data updated April 2023

Total: 53



Data taken from vaccineplanner.org.

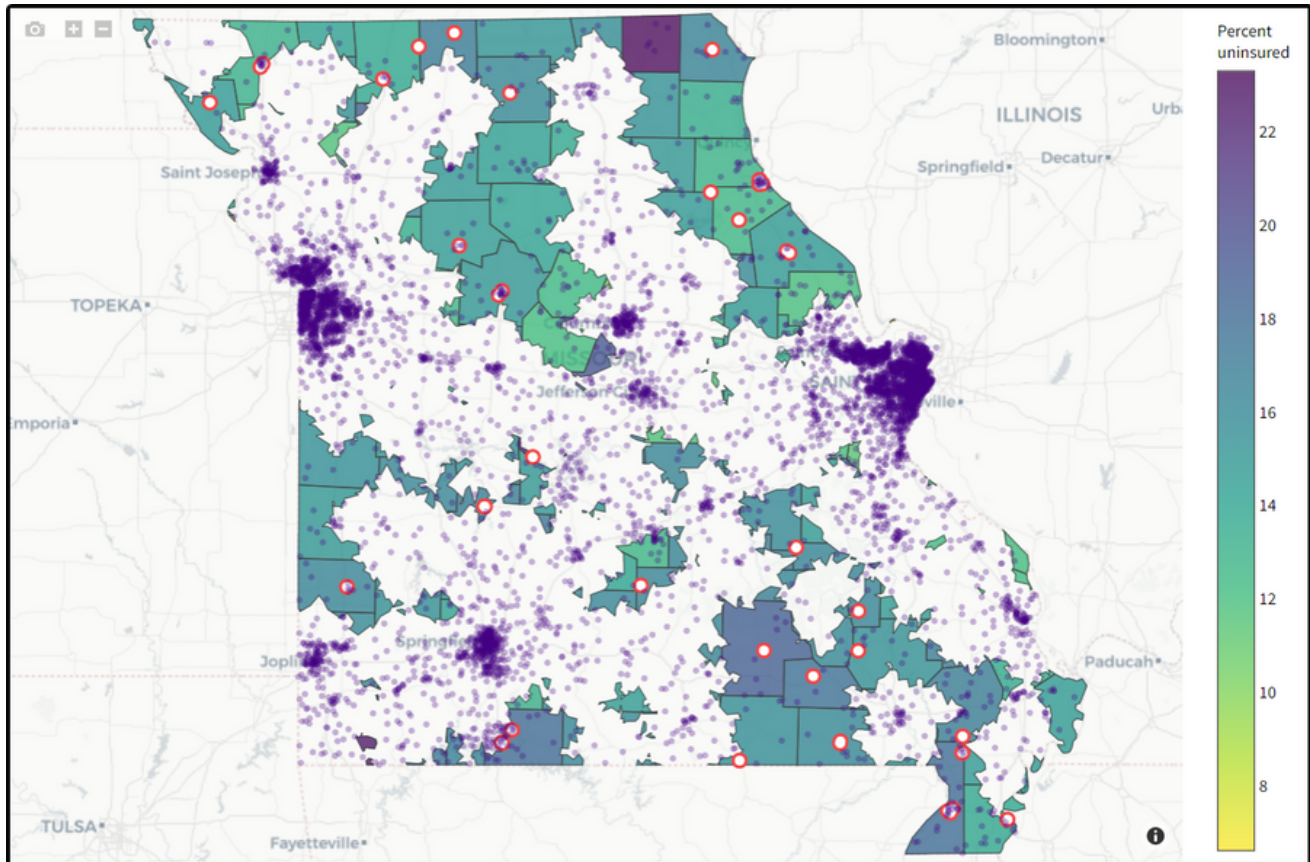
Data parameters:

- Children between the ages of six months and five years
- Those living in low, moderate, or high social vulnerability (based on the [CDC's Social Vulnerability Index \(SVI\)](#))
- Shaded by percent without health insurance
- Drive time of 30 minutes or more to the nearest COVID-19 vaccination site
- Purple dots each represent a population of 1,000 people

Federally Qualified Health Practices Not Currently Providing COVID-19 Vaccines to Children Under Five

Data updated April 2023

Total: 50



Data taken from vaccineplanner.org.

Data parameters:

- Children between the ages of six months and five years
- Those living in low, moderate, or high social vulnerability (based on the [CDC's Social Vulnerability Index \(SVI\)](#))
- Shaded by percent without health insurance
- Drive time of 30 minutes or more to the nearest COVID-19 vaccination site
- Purple dots each represent a population of 1,000 people