

### Table 1 - State Demographics

Data updated December 2022

	Demographic	Total Number	% of Population
Age	Total Population	4,509,394	100%
	Under 5 y/o	259,278	5.7%
	Between 5 and 17 y/o	756,177	16.8%
	Total under 18 y/o	1,015,455	22.5%
Race	American Indian/Alaska Native	7,302	0.2%
	Asian	63,041	1.4%
	Black/African American	320,130	7.1%
	Hispanic/Latino	176,747	3.9%
	Native Hawaiian/Pacific Islander	4,458	0.1%
	Other	14,017	0.3%
	White	3,727,280	82.7%
	2+ Races	196,419	4.4%
Other	Total households	1,785,682	100%
	Households with broadband	1,555,429	87.1%
	Persons in poverty	-	16.5%
	Children in households below poverty level	-	22%
	Language besides English (>5 y/o)	248,797	5.6%
	Uninsured children (<18 y/o)	42,690	4.2%
	Children on Medicaid (<19 y/o)	505,783	49.8%
	Children with private insurance (<19 y/o)	588,026	57.9%
	Children with a disability (<18 y/o)	62,332	6.1%
	Population per square mile	114.1	-

Age data taken from U.S. Census Bureau - [ACS S0101: Age and Sex](#)

Race data taken from U.S. Census Bureau - [ACS B03002: Hispanic or Latino Origin by Race](#)

Household, language, and disability data taken from U.S. Census Bureau - [ACS DP02: Selected Social Characteristics in the United States](#)

Poverty, uninsured, and other data taken from U.S. Census Bureau - [ACS S0901: Children Characteristics](#), [ACS S2701: Selected Characteristics of Health Insurance Coverage in the United States](#), and [QuickFacts: Kentucky](#)

Private insurance and Medicaid data taken from [ACS S2703: Private Health Insurance Coverage by Type and Selected Characteristics](#) and [ACS S2704: Public Health Insurance Coverage by Type and Selected Characteristics](#)

## Table 2 - Tribal Nations

Data updated February 2022

	Total Tribes Represented	Total Population
American Indian Tribes	32+	5,257
Alaska Native Tribes	6+	155
Two or more Tribes	-	328
Unspecified Tribes	-	1,374
Total Tribes	38+	7,114*

Note that the above table shows Tribes represented in U.S. Census data. Citing the Kentucky Arts Council, there are no federally or state recognized Tribes in Kentucky, and over 90,000 American Indians and Alaska Natives living in Kentucky.

\*This value may differ slightly from the value in Table 1 due to an expected margin of error

Tribal data taken from U.S. Census Bureau - [ACS B02014: American Indian and Alaska Native Alone for Selected Tribal Groupings](#) and the [Kentucky Arts Council](#)

## Table 3 - COVID-19 Vaccination Rates

Data updated February 15, 2023

	% with 1+ dose	% with 2 dose series	% change in 3 weeks
6 mo.-4 y/o	6%	-	0%
5-11 y/o	26%	21%	0%
12-17 y/o	50%	44%	0%

Data taken from [AAP - Children and COVID-19 Vaccination Trends](#)

## Table 4 - Pharmacist Authority to Deliver Vaccines Outside of PREP Act

Data updated February 2023

COVID-19: Federal PREP Act allows all pharmacists, pharmacy technicians, and pharmacy interns to administer routine childhood vaccinations and COVID-19 vaccines to all children 3 and older, and the influenza vaccine to those age 19 and older. More info can be found at [naspaspa.us/resource/federal-prep-act-actions/](https://naspaspa.us/resource/federal-prep-act-actions/)

	Influenza	COVID-19
With a patient-specific prescription	Can administer to any age	Can administer to any age
Without a prescription	Can administer to age 9+	Can administer to age 9+

Can pharmacy technicians administer vaccinations in Kentucky outside of PREP? Yes

Data taken from the [National Alliance of State Pharmacy Associations](#) and the [American Disease Prevention Coalition](#)



## Table 5 - School Vaccine Requirements for Kindergarten Enrollment

Data updated January 2023

	DTap	IPV	MMR	Hep A	Hep B	Varicella	PCV	HiB	COVID
Required	✓	✓	✓	✓	✓	✓			

Data taken from [vaccines.procon.org](https://vaccines.procon.org) and [Kentucky Department of Education](https://www.ky.gov/education)

## Table 6 - Vaccine Coverage and Exemption Rates Among Children in Kindergarten

Data updated January 2023

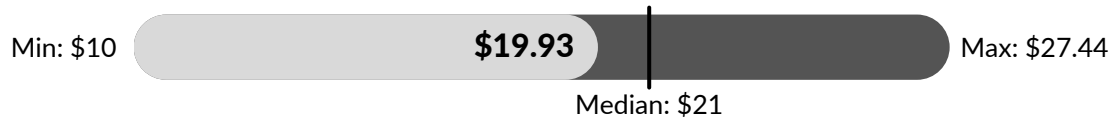
	Kentucky	Median	National
Kindergarten Population	59,233	-	3,837,259
Surveyed %	91.5	-	92.2
2 Doses MMR %	≥86.5	92.9	93.5
5 Doses DTaP %	≥87.1	92.0	93.1
4 Doses Polio %	≥87.8	92.7	93.5
2 Doses VAR %	≥85.6	92.6	92.8
Grace Period of Provisional Enrollment %	-	1.9	2.4
Any Exemption %	1.3	2.7	2.6
Percentage point change in any exemption 2020-2021	0.3	0.2	0.4

Data taken from [CDC MMWR Weekly Report](https://www.cdc.gov/mmwr)

## Per-Dose Vaccine Administration Fee For Medical Providers

Data updated January 2023

This graph represents the range of administration fees across states. Minimum, maximum, and median calculations taken from the 45 states where data was available.



Data taken from [Kentucky Vaccines for Children Provider Manual](https://www.ky.gov/education/vaccines)

## Other Details

- Is Kentucky a Medicaid Expansion state?
  - Yes
- Is Kentucky currently enrolling pharmacies in VFC?
  - No
- Are pharmacies recognized as Medicaid providers?
  - No
- Number of school-based clinics
  - 37
- Universal VFC jurisdiction?
  - No
- Legislative considerations
  - Permits personal belief exemption from COVID-19 vaccine
  - No bans on student COVID-19 vaccine mandates
  - No requirements for student COVID-19 vaccination
  - Minors, including those living on their own and unaccompanied minors experiencing homelessness, may not consent to routine medical care, including vaccinations
  - Permits medical and religious exemptions from school-required immunizations
- Logistical considerations
  - Majority of vaccine deserts are in rural areas (example, eastern KY)
- Opportunities
  - School-located vaccination
  - Recruit non-vaccinating providers in vaccine deserts

### Sources:

- [Kentucky Vaccines for Children Program](#)
- [KFF - Status of State Medicaid Expansion Decisions: Interactive Map](#)
- [NASHP - States Address School Vaccine Mandates and Mask Mandates](#)
- [SchoolHouse Connection - State Laws on Minor Consent to Routine Medical Care](#)

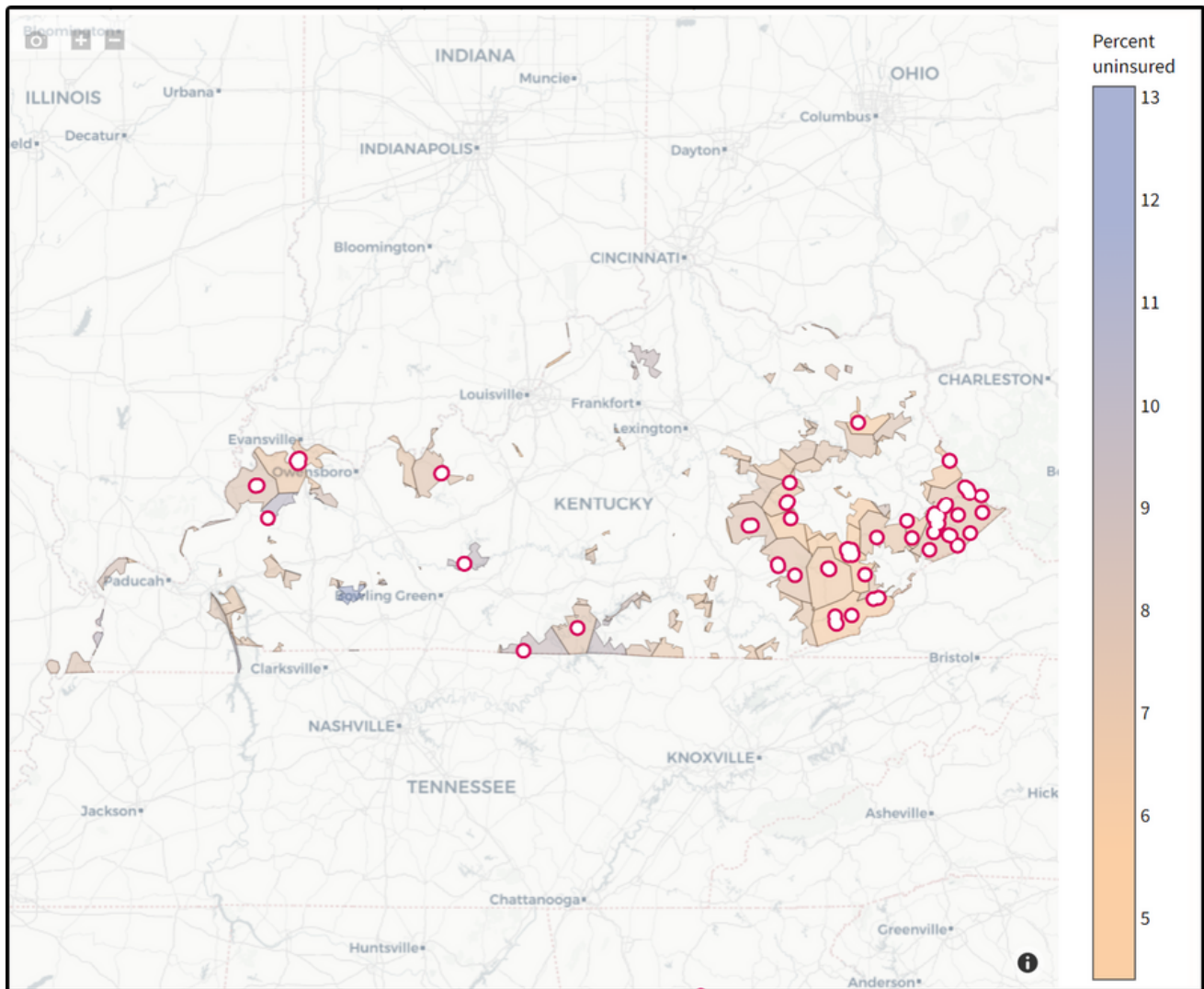
# Maps

Details on marked locations can be found on [vaccineplanner.org](https://vaccineplanner.org)

## Pharmacies Not Currently Providing COVID-19 Vaccines to Children Under Five

Data updated January 2023

**Total: 99**



Data taken from [vaccineplanner.org](https://vaccineplanner.org).

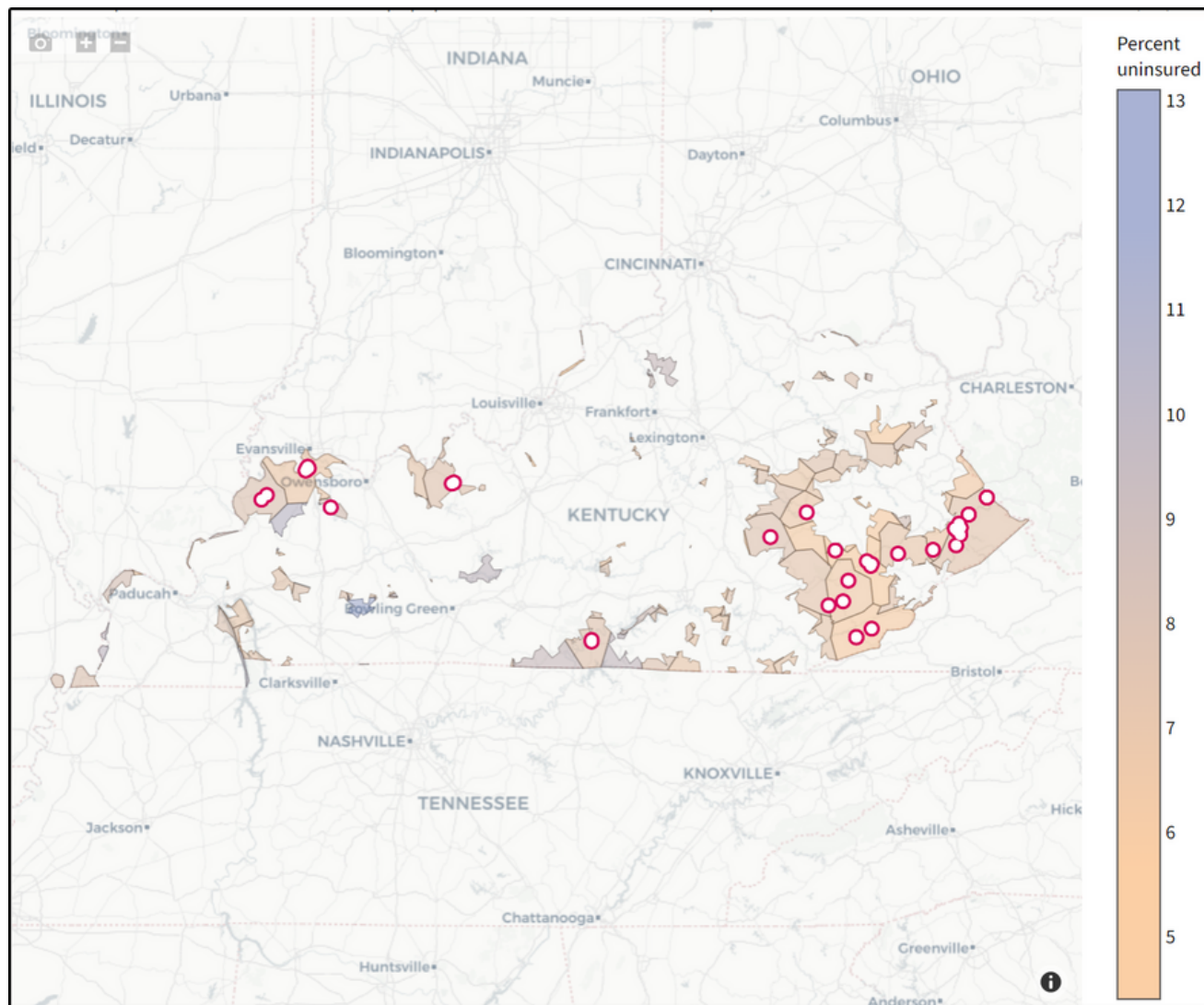
Data parameters:

- Children between the ages of 6 months and 5 years
- Those living in low, moderate, or high social vulnerability (based on the [CDC's Social Vulnerability Index \(SVI\)](#))
- Shaded by percent without health insurance
- Drive time of 30 minutes or more to the nearest COVID-19 vaccination site

# Pediatric and Family Medicine Practices Not Currently Providing COVID-19 Vaccines to Children Under Five

Data updated January 2023

**Total: 52**



Data taken from [vaccineplanner.org](https://vaccineplanner.org).

Data parameters:

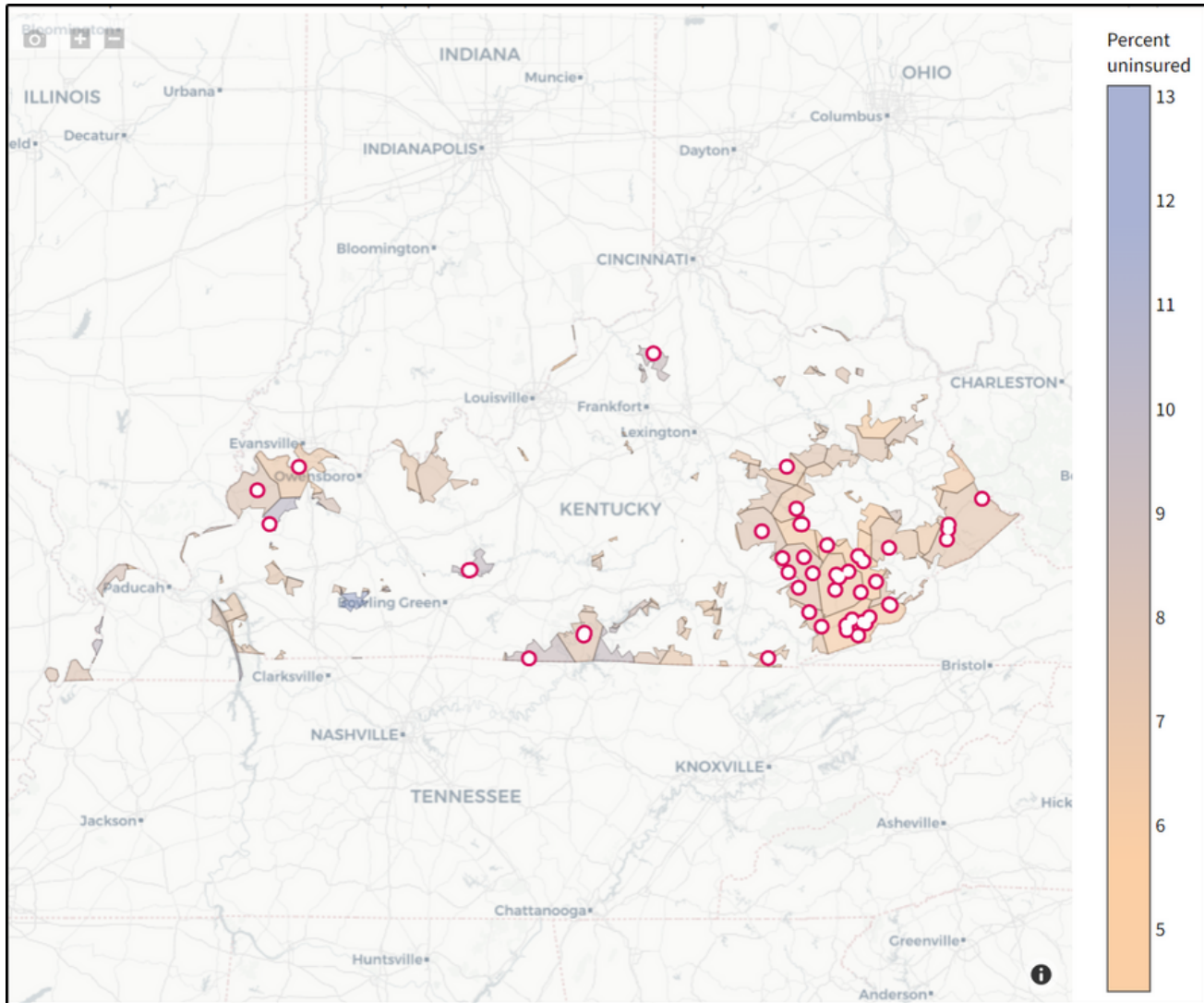
- Children between the ages of 6 months and 5 years
- Those living in low, moderate, or high social vulnerability (based on the [CDC's Social Vulnerability Index \(SVI\)](#))
- Shaded by percent without health insurance
- Drive time of 30 minutes or more to the nearest COVID-19 vaccination site



# Federally Qualified Health Practices Not Currently Providing COVID-19 Vaccines to Children Under Five

Data updated January 2023

**Total: 57**



Data taken from [vaccineplanner.org](https://vaccineplanner.org).

Data parameters:

- Children between the ages of 6 months and 5 years
- Those living in low, moderate, or high social vulnerability (based on the [CDC's Social Vulnerability Index \(SVI\)](#))
- Shaded by percent without health insurance
- Drive time of 30 minutes or more to the nearest COVID-19 vaccination site