

Table 1 - State Demographics

Data updated April 2023

	Demographic	Total Number	% of Population
Age	Total Population	2,934,582	100%
	Under 5 y/o	177,567	6.1%
	Between 5 and 17 y/o	524,639	17.9%
	Total under 18 y/o	702,206	23.9%
Race	American Indian/Alaska Native	10,692	0.4%
	Asian	83,866	2.9%
	Black/African American	151,031	5.1%
	Hispanic/Latino	373,723	12.7%
	Native Hawaiian/Pacific Islander	1,767	0.1%
	Other	12,435	0.4%
	White	2,152,951	73.4%
	2+ Races	148,117	5.0%
Other	Total households	1,159,026	100%
	Households with broadband	1,041,295	89.8%
	Persons in poverty	-	11.7%
	Children in households below poverty level	-	13.3%
	Language besides English (>5 y/o)	321,077	11.6%
	Uninsured children (<18 y/o)	37,565	5.3%
	Children on Medicaid (<19 y/o)	243,731	34.7%
	Children with private insurance (<19 y/o)	501,707	71.4%
	Children with a disability (<18 y/o)	34,471	4.9%
	Population per square mile	35.9	-

Age data taken from U.S. Census Bureau - [ACS S0101: Age and Sex](#)

Race data taken from U.S. Census Bureau - [ACS B03002: Hispanic or Latino Origin by Race](#)

Household, language, and disability data taken from U.S. Census Bureau - [ACS DP02: Selected Social Characteristics in the United States](#)

Poverty, uninsured, and other data taken from U.S. Census Bureau - [ACS S0901: Children Characteristics](#), [ACS S2701: Selected Characteristics of Health Insurance Coverage in the United States](#), and [QuickFacts: Kansas](#)

Private insurance and Medicaid data taken from [ACS S2703: Private Health Insurance Coverage by Type and Selected Characteristics](#) and [ACS S2704: Public Health Insurance Coverage by Type and Selected Characteristics](#)

Table 2 - Tribal Nations

Data updated April 2023

	Total Tribes Represented	Total Population
American Indian Tribes	36+	18,221
Alaska Native Tribes	5+	152
Two or more Tribes	-	703
Unspecified Tribes	-	2,581
Total Tribes	41+	21,657*

Note that the above table shows Tribes represented in U.S. Census data. Citing the Kansas Native American Affairs Office, there are four federally recognized Tribes and no state recognized Tribes in Kansas.

*This value may differ slightly from the value in Table 1 due to an expected margin of error

Tribal data taken from U.S. Census Bureau - [ACS B02014: American Indian and Alaska Native Alone for Selected Tribal Groupings](#) and the [Kansas Native American Affairs Office](#)

Table 3 - COVID-19 Vaccination Rates

Data updated March 1, 2023

	% with 1+ dose	% with 2 dose series	% change in 3 weeks
6 mo.-4 y/o	12%	-	0%
5-11 y/o	35%	28%	0%
12-17 y/o	61%	53%	0%

Data taken from [AAP - Children and COVID-19 Vaccination Trends](#)

Table 4 - Pharmacist Authority to Deliver Vaccines Outside of PREP Act

Data updated April 2023

COVID-19: Federal PREP Act allows all pharmacists, pharmacy technicians, and pharmacy interns to administer routine childhood vaccinations and COVID-19 vaccines to all children 3 and older, and the influenza vaccine to those age 19 and older. More info can be found at naspa.us/resource/federal-prep-act-actions/

	Influenza	COVID-19
With a patient-specific prescription	Can administer to age 6+	Can administer to age 12+
Without a prescription	Can administer to age 6+	Can administer to age 12+

Can pharmacy technicians administer vaccinations in Kansas outside of PREP? No

Data taken from the [National Alliance of State Pharmacy Associations](#) and the [American Disease Prevention Coalition](#)



Table 5 - School Vaccine Requirements for Kindergarten Enrollment

Data updated April 2023

	DTap	IPV	MMR	Hep A	Hep B	Varicella	PCV	HiB	COVID
Required	✓	✓	✓	✓	✓	✓			

Data taken from vaccines.procon.org and [Kansas Department of Health and Environment](https://www.kdhe.ks.gov)

Table 6 - Vaccine Coverage and Exemption Rates Among Children in Kindergarten

Data updated April 2023

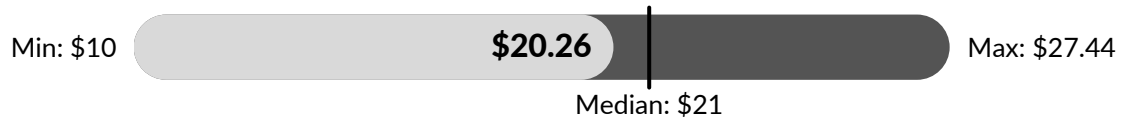
	Kansas	Median	National
Kindergarten Population	36,526	-	3,837,259
Surveyed %	29.5	-	92.2
2 Doses MMR %	91.1	92.9	93.5
5 Doses DTaP %	90.0	92.0	93.1
4 Doses Polio %	92.2	92.7	93.5
2 Doses VAR %	90.4	92.6	92.8
Grace Period of Provisional Enrollment %	-	1.9	2.4
Any Exemption %	2.3	2.7	2.6
Percentage point change in any exemption 2020-2021	0.3	0.2	0.4

Data taken from [CDC MMWR Weekly Report](https://www.cdc.gov/mmwr)

Per-Dose Vaccine Administration Fee For Medical Providers

Data updated April 2023

This graph represents the range of administration fees across states. Minimum, maximum, and median calculations taken from the 45 states where data was available.



Data taken from [Kansas Vaccines for Children Provider Manual](https://www.kdhe.ks.gov)

Other Details

- Is Kansas a Medicaid Expansion state?
 - No
- Is Kansas currently enrolling pharmacies in VFC?
 - Yes
- Are pharmacies recognized as Medicaid providers?
 - No
- Number of school-based clinics (per CDC)
 - 5
- Universal VFC jurisdiction?
 - No
- Legislative considerations
 - Allows religious exemptions from COVID-19 vaccine employer mandates
 - Legislation introduced to prohibit scrutiny of religious exemptions to school-required vaccinations, and repeal the meningitis vaccine requirement to live in university housing passed the Senate on March 29
 - Legislation introduced to preempt the addition of COVID-19 vaccines to the list of school-required vaccines passed the Senate on March 30
 - Legislation introduced to strip public health of the authority to deal with infectious or contagious diseases through rules and regulations, quarantine, or required testing of people afflicted with or exposed to contagious diseases; use all known measures to prevent the spread of certain infectious diseases, including smallpox; and order quarantine and limit public gatherings to control disease spread passed the Senate March 30
 - Bans student COVID-19 vaccine mandates
 - Prohibits state agencies receiving federal funding from requiring proof of COVID-19 vaccination for any purpose
 - Minors may not consent to routine medical care, including vaccinations
 - Permits medical and religious exemptions from school-required vaccinations
- Logistical considerations
 - Widespread vaccine deserts, especially for children under the age of five years
- Opportunities
 - School-located vaccination
 - Recruit non-vaccinating providers in vaccine deserts

Sources:

- [The Topeka Capital-Journal](#)
- [KFF - Status of State Medicaid Expansion Decisions: Interactive Map](#)
- [NASHP - States Address School Vaccine Mandates and Mask Mandates](#)
- [SchoolHouse Connection - State Laws on Minor Consent to Routine Medical Care](#)

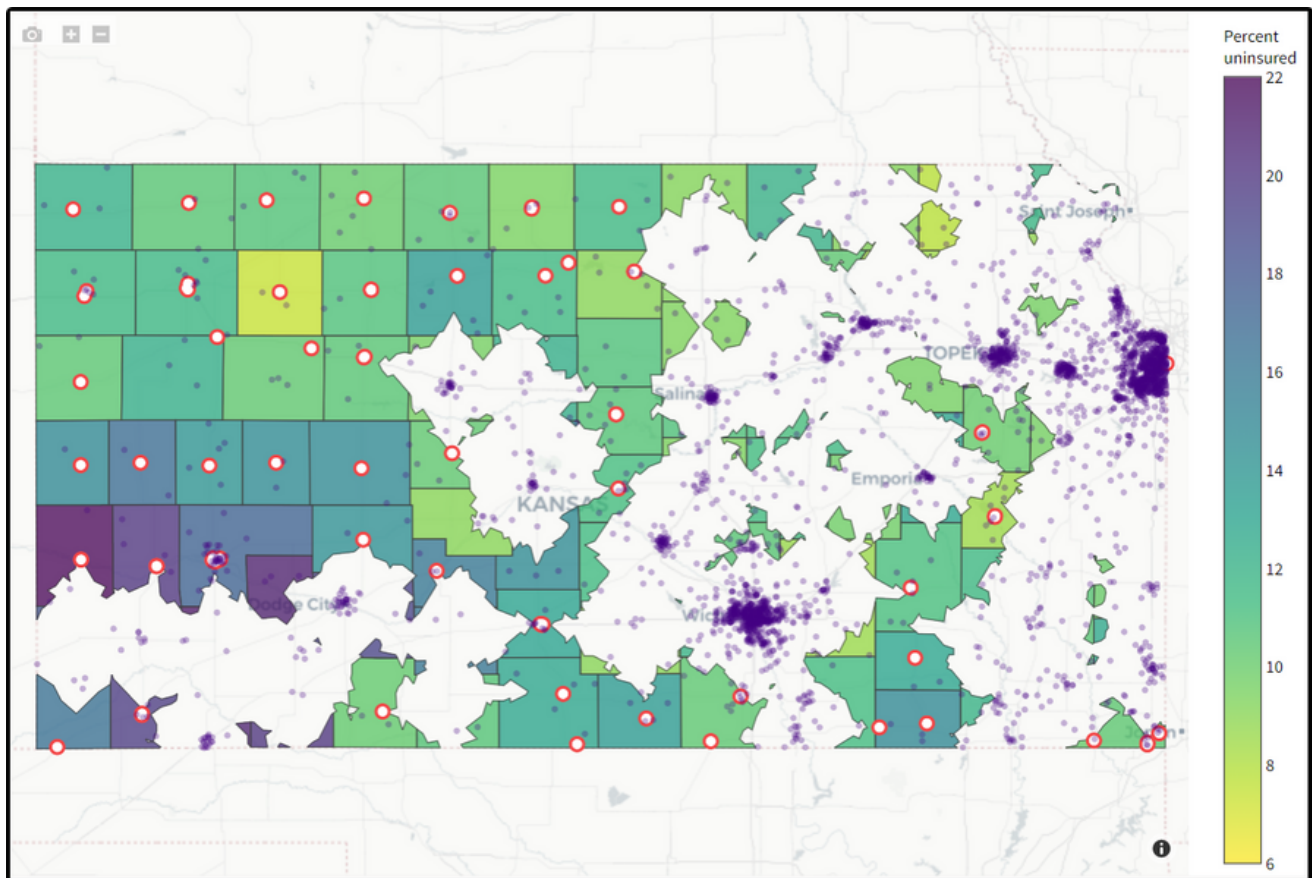
Maps

Details on marked locations can be found on vaccineplanner.org

Pharmacies Not Currently Providing COVID-19 Vaccines to Children Under Five

Data updated April 2023

Total: 76



Data taken from vaccineplanner.org.

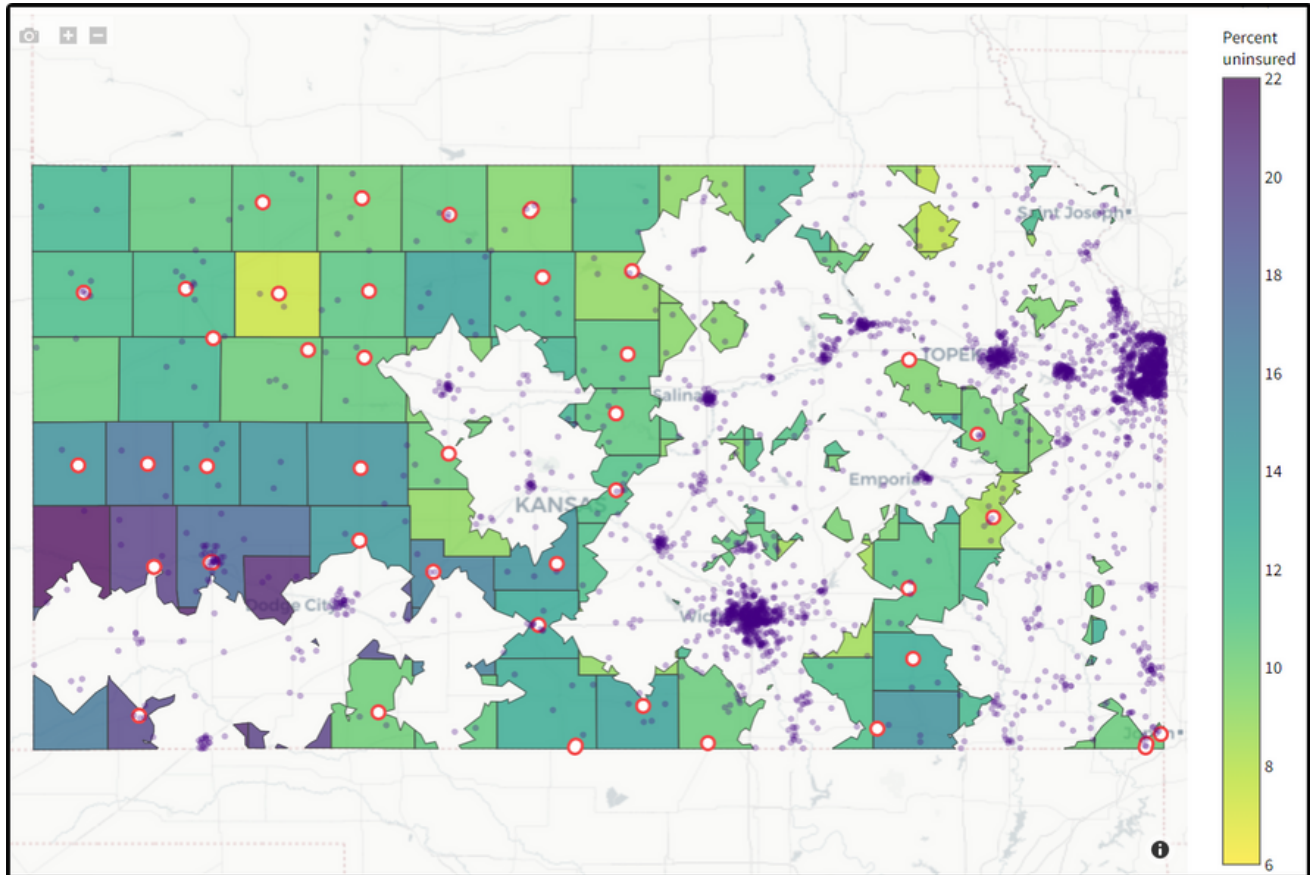
Data parameters:

- Children between the ages of six months and five years
- Those living in low, moderate, or high social vulnerability (based on the [CDC's Social Vulnerability Index \(SVI\)](#))
- Shaded by percent without health insurance
- Drive time of 30 minutes or more to the nearest COVID-19 vaccination site
- Purple dots each represent a population of 1,000 people

Pediatric and Family Medicine Practices Not Currently Providing COVID-19 Vaccines to Children Under Five

Data updated April 2023

Total: 52



Data taken from vaccineplanner.org

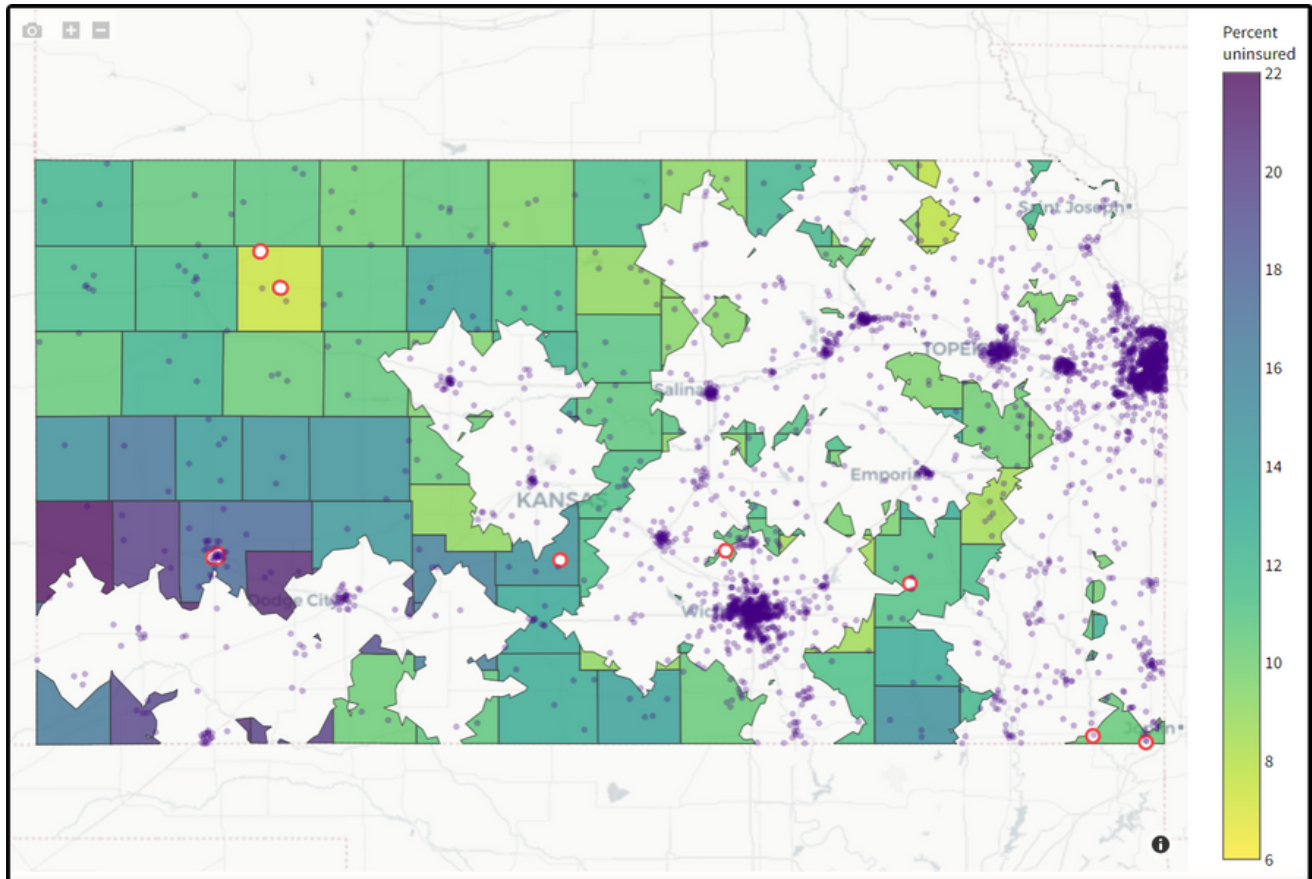
Data parameters:

- Children between the ages of six months and five years
- Those living in low, moderate, or high social vulnerability (based on the [CDC's Social Vulnerability Index \(SVI\)](#))
- Shaded by percent without health insurance
- Drive time of 30 minutes or more to the nearest COVID-19 vaccination site
- Purple dots each represent a population of 1,000 people

Federally Qualified Health Practices Not Currently Providing COVID-19 Vaccines to Children Under Five

Data updated April 2023

Total: 12



Data taken from vaccineplanner.org.

Data parameters:

- Children between the ages of six months and five years
- Those living in low, moderate, or high social vulnerability (based on the [CDC's Social Vulnerability Index \(SVI\)](#))
- Shaded by percent without health insurance
- Drive time of 30 minutes or more to the nearest COVID-19 vaccination site
- Purple dots each represent a population of 1,000 people