

Table 1 - State Demographics

Data updated March 2023

	Demographic	Total Number	% of Population
Age	Total Population	3,193,079	100%
	Under 5 y/o	187,257	5.9%
	Between 5 and 17 y/o	549,727	17.2%
	Total under 18 y/o	736,984	23.1%
Race	American Indian/Alaska Native	8,550	0.3%
	Asian	74,014	2.3%
	Black/African American	112,210	3.5%
	Hispanic/Latino	212,306	6.6%
	Native Hawaiian/Pacific Islander	4,739	0.1%
	Other	10,257	0.3%
	White	2,649,470	83.0%
	2+ Races	121,533	3.8%
Other	Total households	1,300,467	100%
	Households with broadband	1,148,902	88.3%
	Persons in poverty	-	11.1%
	Children in households below poverty level	-	12.5%
	Language besides English (>5 y/o)	259,552	8.6%
	Uninsured children (<18 y/o)	26,206	3.6%
	Children on Medicaid (<19 y/o)	292,448	39.7%
	Children with private insurance (<19 y/o)	514,480	69.8%
	Children with a disability (<18 y/o)	32,300	4.4%
	Population per square mile	57.1	-

Age data taken from U.S. Census Bureau - [ACS S0101: Age and Sex](#)

Race data taken from U.S. Census Bureau - [ACS B03002: Hispanic or Latino Origin by Race](#)

Household, language, and disability data taken from U.S. Census Bureau - [ACS DP02: Selected Social Characteristics in the United States](#)

Poverty, uninsured, and other data taken from U.S. Census Bureau - [ACS S0901: Children Characteristics](#), [ACS S2701: Selected Characteristics of Health Insurance Coverage in the United States](#), and [QuickFacts: Iowa](#)

Private insurance and Medicaid data taken from [ACS S2703: Private Health Insurance Coverage by Type and Selected Characteristics](#) and [ACS S2704: Public Health Insurance Coverage by Type and Selected Characteristics](#)

Table 2 - Tribal Nations

Data updated March 2023

	Total Tribes Represented	Total Population
American Indian Tribes	34+	8,256
Alaska Native Tribes	5+	119
Two or more Tribes	-	555
Unspecified Tribes	-	1,959
Total Tribes	39+	10,889*

Note that the above table shows Tribes represented in U.S. Census data. Citing Iowa State University and indianaffairs.gov, there is one federally recognized Tribe, no state recognized Tribes, and over 17,000 Native Americans residing in Iowa.

*This value may differ slightly from the value in Table 1 due to an expected margin of error

Tribal data taken from U.S. Census Bureau - [ACS B02014: American Indian and Alaska Native Alone for Selected Tribal Groupings](#), [Iowa State University](#), and [indianaffairs.gov](#)

Table 3 - COVID-19 Vaccination Rates

Data updated March 1, 2023

	% with 1+ dose	% with 2 dose series	% change in 3 weeks
6 mo.-4 y/o	11%	-	0%
5-11 y/o	31%	28%	0%
12-17 y/o	54%	48%	0%

Data taken from [AAP - Children and COVID-19 Vaccination Trends](#)

Table 4 - Pharmacist Authority to Deliver Vaccines Outside of PREP Act

Data updated March 2023

COVID-19: Federal PREP Act allows all pharmacists, pharmacy technicians, and pharmacy interns to administer routine childhood vaccinations and COVID-19 vaccines to all children three and older, and the influenza vaccine to those age 19 and older. More info can be found at naspa.us/resource/federal-prep-act-actions/

	Influenza	COVID-19
With a patient-specific prescription	Can administer to any age	Can administer to any age
Without a prescription	Can administer to any age	Can administer to age 18+

Can pharmacy technicians administer vaccinations in Iowa outside of PREP? Yes

Data taken from the [National Alliance of State Pharmacy Associations](#) and the [American Disease Prevention Coalition](#)



Table 5 - School Vaccine Requirements for Kindergarten Enrollment

Data updated March 2023

	DTap	IPV	MMR*	Hep A	Hep B	Varicella	PCV	HiB	COVID
Required	✓	✓	✓		✓	✓			

*Iowa does not require a mumps vaccine, but does require measles and rubella vaccines

Data taken from vaccines.procon.org and the [Iowa Department of Health and Human Services](http://www.idhs.gov)

Table 6 - Vaccine Coverage and Exemption Rates Among Children in Kindergarten

Data updated March 2023

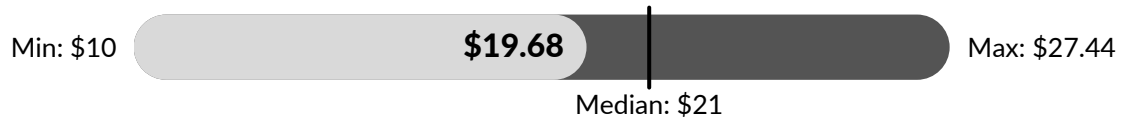
	Iowa	Median	National
Kindergarten Population	40,111	-	3,837,259
Surveyed %	100	-	92.2
2 Doses MMR %	≥90.6	92.9	93.5
5 Doses DTaP %	≥90.6	92.0	93.1
4 Doses Polio %	≥90.6	92.7	93.5
2 Doses VAR %	≥90.6	92.6	92.8
Grace Period of Provisional Enrollment %	5.4	1.9	2.4
Any Exemption %	2.4	2.7	2.6
Percentage point change in any exemption 2020-2021	0.2	0.2	0.4

Data taken from [CDC MMWR Weekly Report](http://www.cdc.gov/mmwr)

Per-Dose Vaccine Administration Fee For Medical Providers

Data updated March 2023

This graph represents the range of administration fees across states. Minimum, maximum, and median calculations taken from the 45 states where data was available.



Data taken from [Iowa Vaccines for Children Provider Manual](http://www.idhs.gov)

Other Details

- Is Iowa a Medicaid Expansion state?
 - Yes
- Is Iowa currently enrolling pharmacies in VFC?
 - Yes
- Are pharmacies recognized as Medicaid providers?
 - No
- Number of school-based clinics (per CDC)
 - 7
- Universal VFC jurisdiction?
 - No
- Legislative considerations
 - Iowa has a ban on student COVID-19 vaccine mandates
 - Permits medical and religious exemptions from school-required vaccinations
 - Legislation introduced that would both prohibit discrimination based on vaccination status and criminalize inquiry into vaccination status died in committee
- Logistical considerations
 - Widespread vaccine deserts for children ages six months to four years
- Opportunities
 - School-located vaccination
 - Recruit non-vaccinating providers in vaccine deserts

Sources:

- vaccineplanner.org
- [KFF - Status of State Medicaid Expansion Decisions: Interactive Map](#)
- [NASHP - States Address School Vaccine Mandates and Mask Mandates](#)
- [SchoolHouse Connection - State Laws on Minor Consent to Routine Medical Care](#)

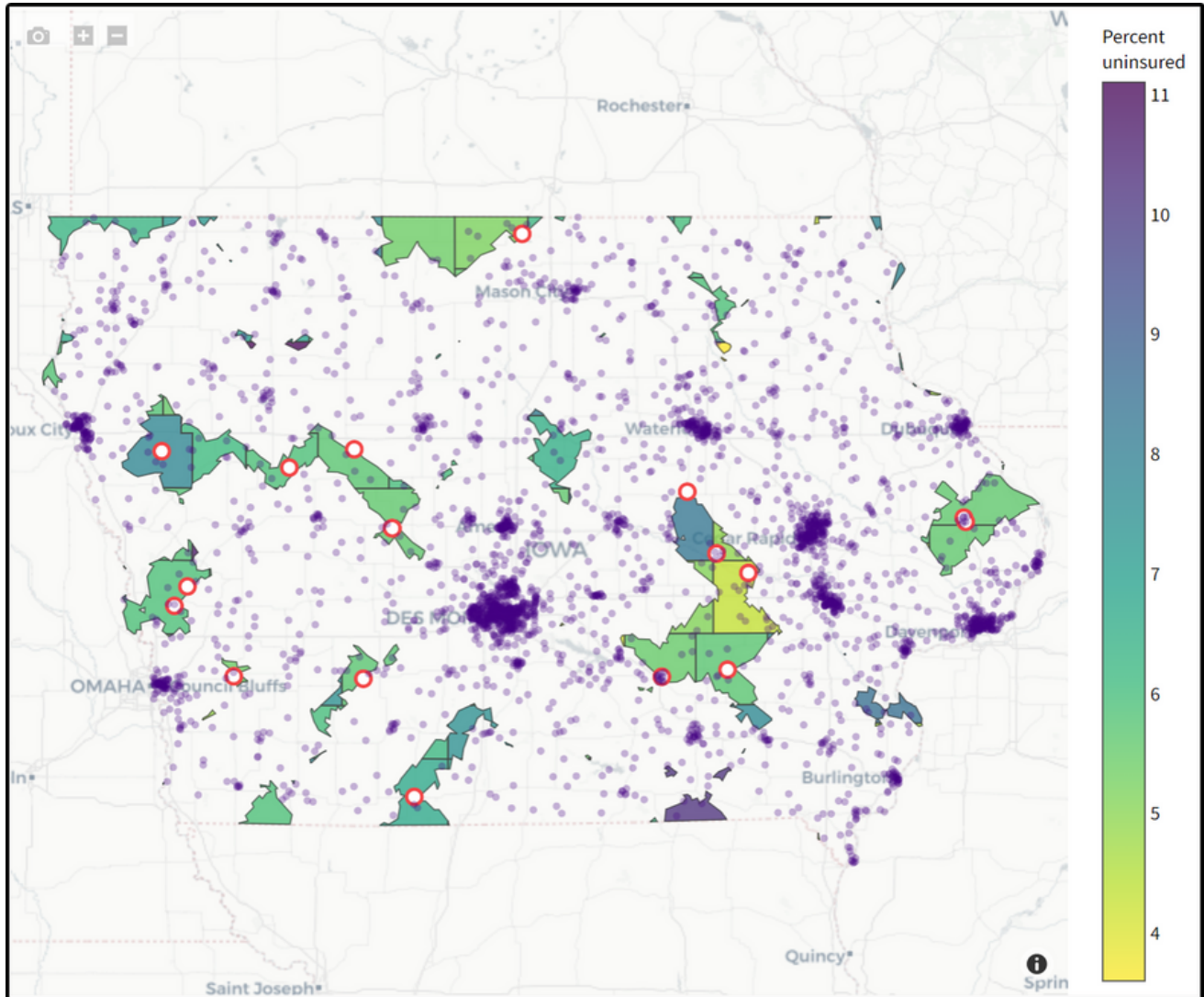
Maps

Details on marked locations can be found on vaccineplanner.org

Pharmacies Not Currently Providing COVID-19 Vaccines to Children Under Five

Data updated March 2023

Total: 19



Data taken from vaccineplanner.org.

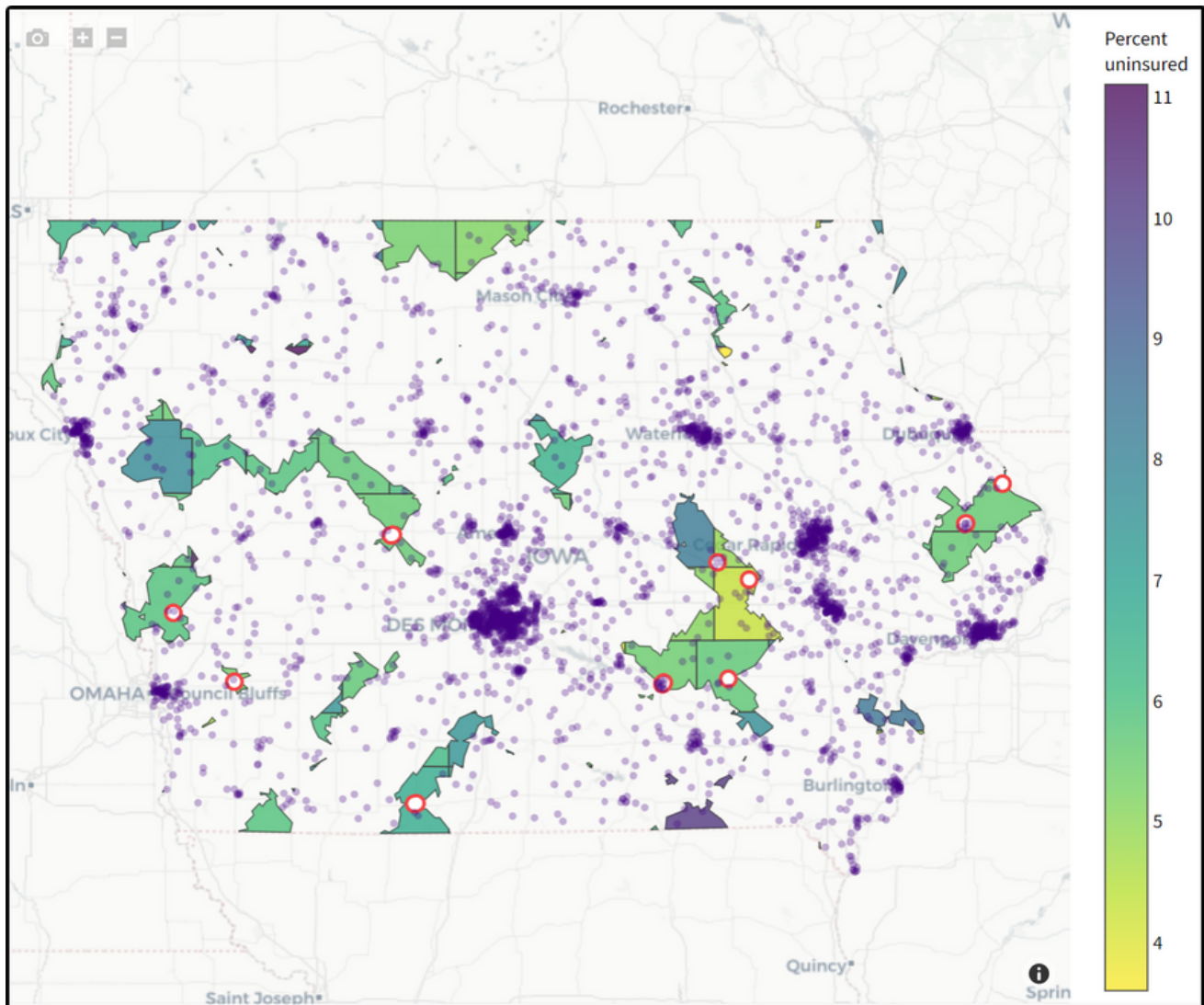
Data parameters:

- Children between the ages of six months and five years
- Those living in low, moderate, or high social vulnerability (based on the [CDC's Social Vulnerability Index \(SVI\)](#))
- Shaded by percent without health insurance
- Drive time of 30 minutes or more to the nearest COVID-19 vaccination site
- Purple dots each represent a population of 1,000 people

Pediatric and Family Medicine Practices Not Currently Providing COVID-19 Vaccines to Children Under Five

Data updated March 2023

Total: 17



Data taken from vaccineplanner.org.

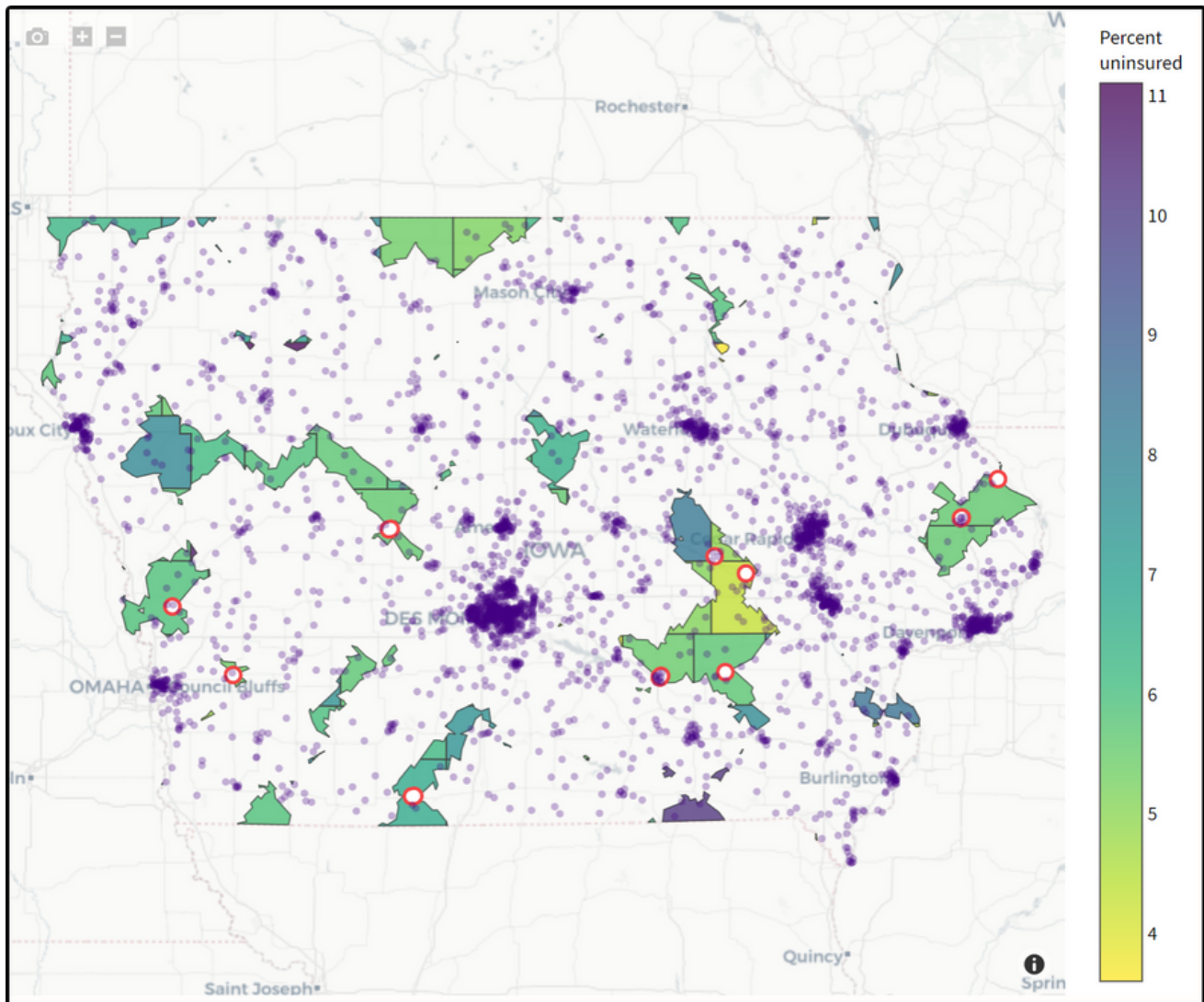
Data parameters:

- Children between the ages of six months and five years
- Those living in low, moderate, or high social vulnerability (based on the [CDC's Social Vulnerability Index \(SVI\)](#))
- Shaded by percent without health insurance
- Drive time of 30 minutes or more to the nearest COVID-19 vaccination site
- Purple dots each represent a population of 1,000 people

Federally Qualified Health Practices Not Currently Providing COVID-19 Vaccines to Children Under Five

Data updated March 2023

Total: 8



Data taken from vaccineplanner.org.

Data parameters:

- Children between the ages of six months and five years
- Those living in low, moderate, or high social vulnerability (based on the [CDC's Social Vulnerability Index \(SVI\)](#))
- Shaded by percent without health insurance
- Drive time of 30 minutes or more to the nearest COVID-19 vaccination site
- Purple dots each represent a population of 1,000 people