

### Table 1 - State Demographics

Data updated April 2023

	Demographic	Total Number	% of Population
Age	Total Population	1,900,923	100%
	Under 5 y/o	113,051	5.9%
	Between 5 and 17 y/o	356,935	18.8%
	Total under 18 y/o	469,986	24.7%
Race	American Indian/Alaska Native	13,554	0.7%
	Asian	25,849	1.4%
	Black/African American	13,675	0.7%
	Hispanic/Latino	251,916	13.3%
	Native Hawaiian/Pacific Islander	1,729	0.1%
	Other	14,632	0.8%
	White	1,495,476	78.7%
	2+ Races	84,092	4.4%
Other	Total households	693,882	100%
	Households with broadband	627,634	90.5%
	Persons in poverty	-	11.0%
	Children in households below poverty level	-	13.1%
	Language besides English (>5 y/o)	199,096	11.1%
	Uninsured children (<18 y/o)	35,112	7.5%
	Children on Medicaid (<19 y/o)	181,187	38.6%
	Children with private insurance (<19 y/o)	312,439	66.5%
	Children with a disability (<18 y/o)	23,623	5.0%
	Population per square mile	22.3	-

Age data taken from U.S. Census Bureau - [ACS S0101: Age and Sex](#)

Race data taken from U.S. Census Bureau - [ACS B03002: Hispanic or Latino Origin by Race](#)

Household, language, and disability data taken from U.S. Census Bureau - [ACS DP02: Selected Social Characteristics in the United States](#)

Poverty, uninsured, and other data taken from U.S. Census Bureau - [ACS S0901: Children Characteristics](#), [ACS S2701: Selected Characteristics of Health Insurance Coverage in the United States](#), and [QuickFacts: Idaho](#)

Private insurance and Medicaid data taken from [ACS S2703: Private Health Insurance Coverage by Type and Selected Characteristics](#) and [ACS S2704: Public Health Insurance Coverage by Type and Selected Characteristics](#)

## Table 2 - Tribal Nations

Data updated April 2023

	Total Tribes Represented	Total Population
American Indian Tribes	38+	18,233
Alaska Native Tribes	6+	476
Two or more Tribes	-	533
Unspecified Tribes	-	3,557
Total Tribes	44+	22,799*

**Note that the above table shows Tribes represented in U.S. Census data. There are 4 federally recognized and no state recognized Tribes in Idaho.**

\*This value may differ slightly from the value in Table 1 due to an expected margin of error

Tribal data taken from U.S. Census Bureau - [ACS B02014: American Indian and Alaska Native Alone for Selected Tribal Groupings](#) and [indianaaffairs.gov](#)

## Table 3 - COVID-19 Vaccination Rates

Data updated February 15, 2023

	% with 1+ dose	% with 2 dose series	% change in 3 weeks
6 mo.-4 y/o	6%	-	0%
5-11 y/o	21%	18%	0%
12-17 y/o	42%	38%	0%

Data taken from [AAP - Children and COVID-19 Vaccination Trends](#)

## Table 4 - Pharmacist Authority to Deliver Vaccines Outside of PREP Act

Data updated May 2023

COVID-19: Federal PREP Act allows all pharmacists, pharmacy technicians, and pharmacy interns to administer routine childhood vaccinations and COVID-19 vaccines to all children 3 and older, and the influenza vaccine to those age 19 and older. More info can be found at [naspa.us/resource/federal-prep-act-actions/](#)

	Influenza	COVID-19
With a patient-specific prescription	Can administer to any age	Can administer to any age
Without a prescription	Can administer to any age	Can administer to any age

Can pharmacy technicians administer vaccinations in Idaho outside of PREP? Yes

Data taken from the [National Alliance of State Pharmacy Associations](#) and the [American Disease Prevention Coalition](#)



## Table 5 - School Vaccine Requirements for Kindergarten Enrollment

Data updated May 2023

	DTap	IPV	MMR	Hep A	Hep B	Varicella	PCV	HiB	COVID
Required	✓	✓	✓	✓	✓	✓			

Data taken from [vaccines.procon.org](https://vaccines.procon.org) and [Idaho Department of Health & Welfare: Division of Public Health](https://www.idaho.gov)

## Table 6 - Vaccine Coverage and Exemption Rates Among Children in Kindergarten

Data updated May 2023

	Idaho	Median	National
Kindergarten Population	23,854	-	3,837,259
Surveyed %	99.6	-	92.2
2 Doses MMR %	83.9	92.9	93.5
5 Doses DTaP %	83.5	92.0	93.1
4 Doses Polio %	84.0	92.7	93.5
2 Doses VAR %	83.4	92.6	92.8
Grace Period of Provisional Enrollment %	1.8	1.9	2.4
Any Exemption %	9.8	2.7	2.6
Percentage point change in any exemption 2020-2021	1.6	0.2	0.4

Data taken from [CDC MMWR Weekly Report](https://www.cdc.gov/mmwr)

## Per-Dose Vaccine Administration Fee For Medical Providers

Data updated May 2023

This graph represents the range of administration fees across states. Minimum, maximum, and median calculations taken from the 45 states where data was available.



Data Source: -

## Other Details

- Is Idaho a Medicaid Expansion state?
  - Yes
- Is Idaho currently enrolling pharmacies in VFC?
  - Yes
- Are pharmacies recognized as Medicaid providers?
  - No
- Number of school-based clinics, per CDC
  - 2
- Universal VFC jurisdiction?
  - Yes
- Legislative considerations
  - Bans student COVID-19 vaccine mandates in public institutions of higher education
  - Any person who comprehends the need for, nature of, and risks inherent to any hospital, medical, dental, surgical, or other health care treatment or procedure is competent to consent on his/her own behalf
  - Permits medical, personal belief, and religious exemptions from school-required immunizations
  - Effective July 1, 2023, licensed daycare facilities are required to describe the immunization exemption law in communications with parents
- Logistical considerations
  - Widespread vaccine deserts, especially for children <5 years old
- Opportunities
  - School-located vaccination
  - Recruit non-vaccinating providers in vaccine deserts- many opportunities to recruit family medicine physicians and pharmacies in rural areas

### Sources:

- [KFF - Status of State Medicaid Expansion Decisions: Interactive Map](#)
- [NASHP - States Address School Vaccine Mandates and Mask Mandates](#)
- [SchoolHouse Connection - State Laws on Minor Consent to Routine Medical Care](#)

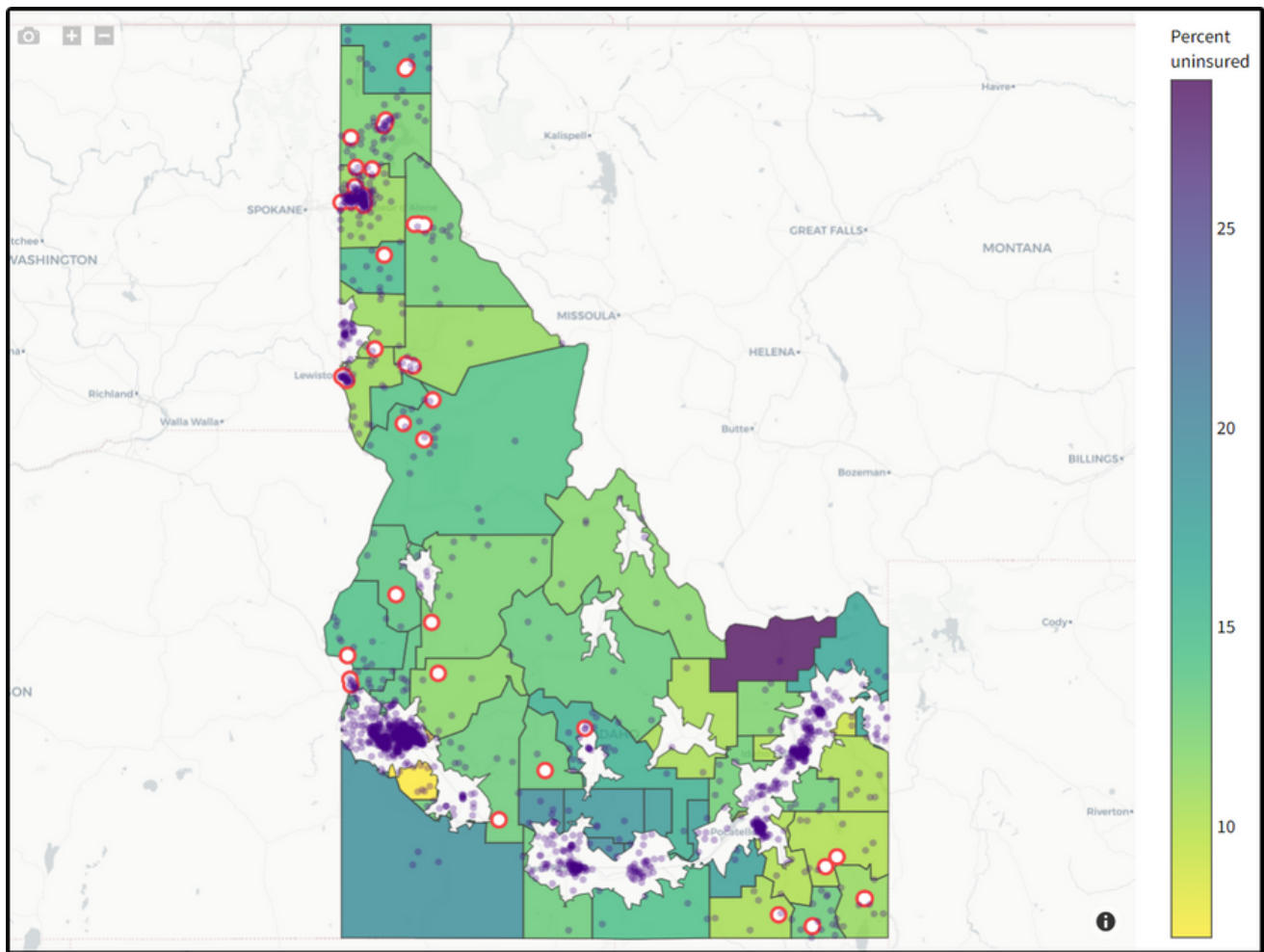
# Maps

Details on marked locations can be found on [vaccineplanner.org](https://vaccineplanner.org)

## Pharmacies Not Currently Providing COVID-19 Vaccines to Children Under Five

Data updated April 2023

**Total: 71**



Data taken from [vaccineplanner.org](https://vaccineplanner.org).

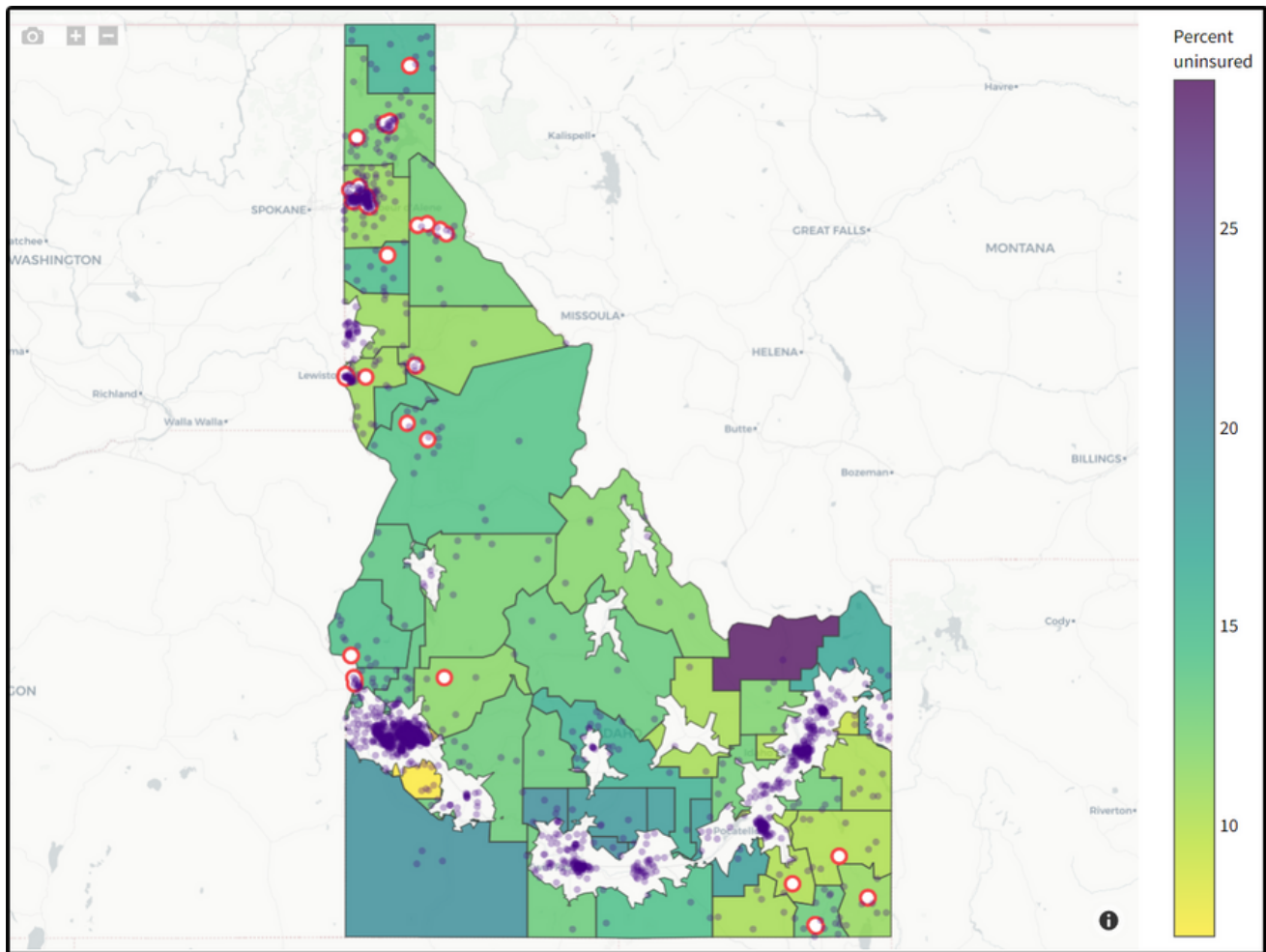
Data parameters:

- Children between the ages of six months and five years
- Those living in low, moderate, or high social vulnerability (based on the [CDC's Social Vulnerability Index \(SVI\)](#))
- Shaded by percent without health insurance
- Drive time of 30 minutes or more to the nearest COVID-19 vaccination site
- Purple dots each represent a population of 1,000 people

# Pediatric and Family Medicine Practices Not Currently Providing COVID-19 Vaccines to Children Under Five

Data updated April 2023

**Total: 81**



Data taken from [vaccineplanner.org](https://vaccineplanner.org).

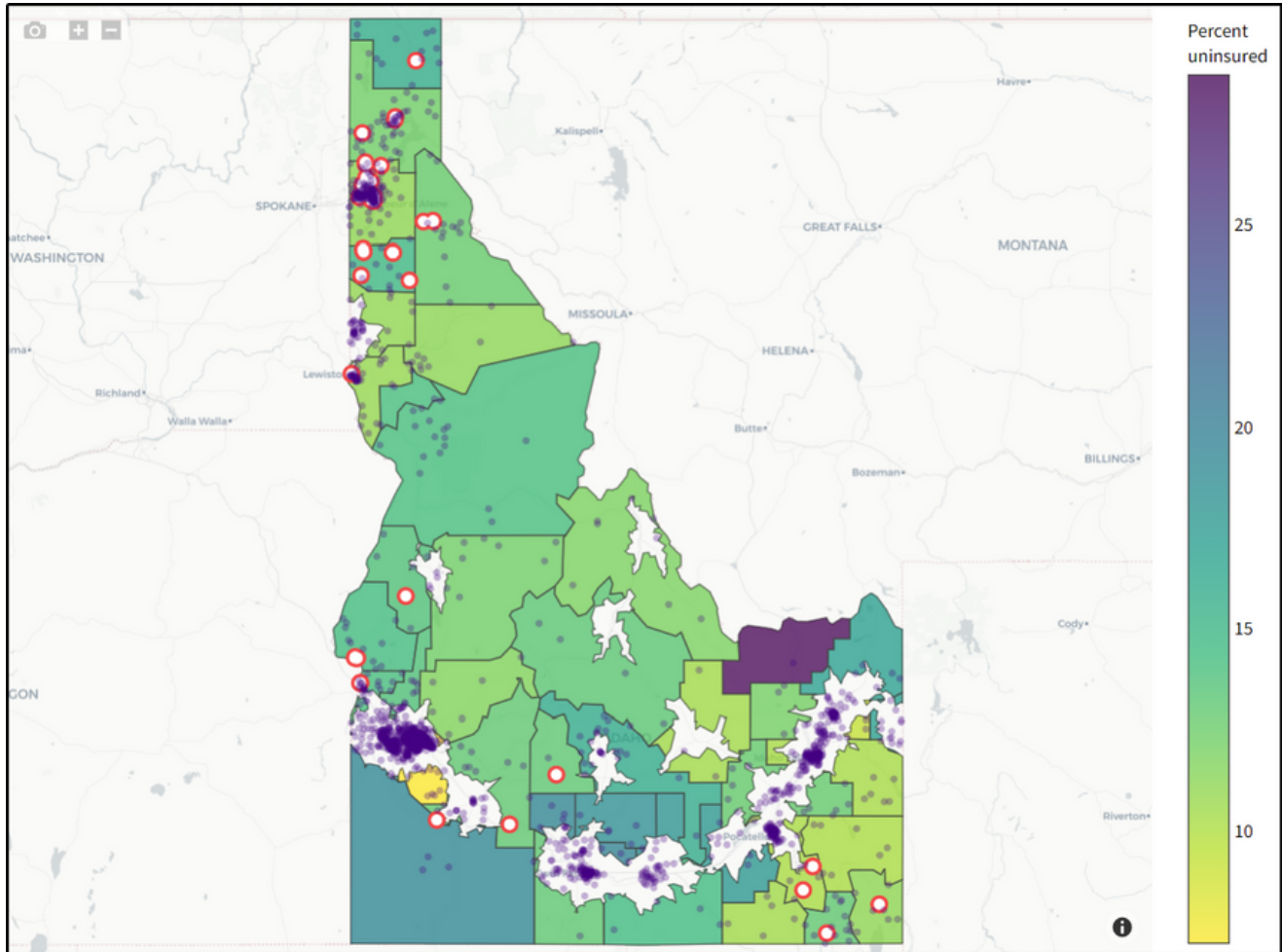
Data parameters:

- Children between the ages of six months and five years
- Those living in low, moderate, or high social vulnerability (based on the [CDC's Social Vulnerability Index \(SVI\)](#))
- Shaded by percent without health insurance
- Drive time of 30 minutes or more to the nearest COVID-19 vaccination site
- Purple dots each represent a population of 1,000 people

# Federally Qualified Health Practices Not Currently Providing COVID-19 Vaccines to Children Under Five

Data updated April 2023

**Total: 68**



Data taken from [vaccineplanner.org](https://vaccineplanner.org).

Data parameters:

- Children between the ages of six months and five years
- Those living in low, moderate, or high social vulnerability (based on the [CDC's Social Vulnerability Index \(SVI\)](#))
- Shaded by percent without health insurance
- Drive time of 30 minutes or more to the nearest COVID-19 vaccination site
- Purple dots each represent a population of 1,000 people