

Table 1 - State Demographics

Data updated April 2023

	Demographic	Total Number	% of Population
Age	Total Population	3,025,891	100%
	Under 5 y/o	179,924	5.9%
	Between 5 and 17 y/o	523,869	17.3%
	Total under 18 y/o	703,793	23.3%
Race	American Indian/Alaska Native	11,077	0.4%
	Asian	42,588	1.4%
	Black/African American	445,772	14.7%
	Hispanic/Latino	247,641	8.2%
	Native Hawaiian/Pacific Islander	11,724	0.4%
	Other	6,550	0.2%
	White	2,064,333	68.2%
	2+ Races	196,206	6.5%
Other	Total households	1,183,675	100%
	Households with broadband	1,012,208	85.5%
	Persons in poverty	-	16.3%
	Children in households below poverty level	-	22.4%
	Language besides English (>5 y/o)	1,012,208	35.6%
	Uninsured children (<18 y/o)	42,924	6.1%
	Children on Medicaid (<19 y/o)	390,721	55.5%
	Children with private insurance (<19 y/o)	341,535	48.5%
	Children with a disability (<18 y/o)	49,322	7.0%
	Population per square mile	57.9	-

Age data taken from U.S. Census Bureau - [ACS S0101: Age and Sex](#)

Race data taken from U.S. Census Bureau - [ACS B03002: Hispanic or Latino Origin by Race](#)

Household, language, and disability data taken from U.S. Census Bureau - [ACS DP02: Selected Social Characteristics in the United States](#)

Poverty, uninsured, and other data taken from U.S. Census Bureau - [ACS S0901: Children Characteristics](#), [ACS S2701: Selected Characteristics of Health Insurance Coverage in the United States](#), and [QuickFacts: Arkansas](#)

Private insurance and Medicaid data taken from [ACS S2703: Private Health Insurance Coverage by Type and Selected Characteristics](#) and [ACS S2704: Public Health Insurance Coverage by Type and Selected Characteristics](#)

Table 2 - Tribal Nations

Data updated April 2023

	Total Tribes Represented	Total Population
American Indian Tribes	35+	14,062
Alaska Native Tribes	4+	175
Two or more Tribes	-	733
Unspecified Tribes	-	2,489
Total Tribes	39+	17,459*

Note that the above table shows Tribes represented in U.S. Census data. There are no federally recognized or state recognized Tribes in Arkansas.

*This value may differ slightly from the value in Table 1 due to an expected margin of error

Tribal data taken from U.S. Census Bureau - [ACS B02014: American Indian and Alaska Native Alone for Selected Tribal Groupings](#) and [indianaffairs.gov](#)

Table 3 - COVID-19 Vaccination Rates

Data updated March 1, 2023

	% with 1+ dose	% with 2 dose series	% change in 3 weeks
6 mo.-4 y/o	6%	-	0%
5-11 y/o	26%	20%	0%
12-17 y/o	56%	45%	0%

Data taken from [AAP - Children and COVID-19 Vaccination Trends](#)

Table 4 - Pharmacist Authority to Deliver Vaccines Outside of PREP Act

Data updated April 2023

COVID-19: Federal PREP Act allows all pharmacists, pharmacy technicians, and pharmacy interns to administer routine childhood vaccinations and COVID-19 vaccines to all children 3 and older, and the influenza vaccine to those age 19 and older. More info can be found at [naspa.us/resource/federal-prep-act-actions/](#)

	Influenza	COVID-19
With a patient-specific prescription	Can administer to age 3+	Can administer to age 3+
Without a prescription	Can administer to age 3+	Can administer to age 3+

Can pharmacy technicians administer vaccinations in Arkansas outside of PREP? Yes

Data taken from the [National Alliance of State Pharmacy Associations](#) and the [American Disease Prevention Coalition](#)



Table 5 - School Vaccine Requirements for Kindergarten Enrollment

Data updated April 2023

	DTap	IPV	MMR	Hep A	Hep B	Varicella	PCV	HiB	COVID
Required	✓	✓	✓	✓	✓	✓			

Data taken from vaccines.procon.org and [Arkansas Department of Health](https://www.arkansas.gov)

Table 6 - Vaccine Coverage and Exemption Rates Among Children in Kindergarten

Data updated April 2023

	Arkansas	Median	National
Kindergarten Population	39,358	-	3,837,259
Surveyed %	96.3	-	92.2
2 Doses MMR %	92.5	92.9	93.5
5 Doses DTaP %	91.3	92.0	93.1
4 Doses Polio %	91.4	92.7	93.5
2 Doses VAR %	91.9	92.6	92.8
Grace Period of Provisional Enrollment %	7.5	1.9	2.4
Any Exemption %	2.5	2.7	2.6
Percentage point change in any exemption 2020-2021	0.5	0.2	0.4

Data taken from [CDC MMWR Weekly Report](https://www.cdc.gov/mmwr)

Per-Dose Vaccine Administration Fee For Medical Providers

Data updated April 2023

This graph represents the range of administration fees across states. Minimum, maximum, and median calculations taken from the 45 states where data was available.



Data taken from [Arkansas Vaccines for Children Provider Manual](https://www.arkansas.gov)

Other Details

- Is Arkansas a Medicaid Expansion state?
 - Yes
- Is Arkansas currently enrolling pharmacies in VFC?
 - Yes
- Are pharmacies recognized as Medicaid providers?
 - No
- Number of school-based clinics (per CDC)
 - 13
- Universal VFC jurisdiction?
 - No
- Legislative considerations
 - Legislation to create the criminal offense of "vaccine harm" passed the Senate and is under consideration in the House
 - Bans student COVID-19 vaccine mandates
 - Bans the use of "vaccine passports" as a condition for education
 - Minors of any age may consent to all healthcare services, including vaccinations
 - Permits medical, philosophical, and religious exemptions from school-required vaccinations
- Logistical considerations
 - Widespread vaccine deserts for children
- Opportunities
 - School-located vaccination
 - Recruit non-vaccinating providers in vaccine deserts

Sources:

- vaxteen.org
- [Arkansas State Legislature](#)
- [KFF - Status of State Medicaid Expansion Decisions: Interactive Map](#)
- [NASHP - States Address School Vaccine Mandates and Mask Mandates](#)
- [SchoolHouse Connection - State Laws on Minor Consent to Routine Medical Care](#)

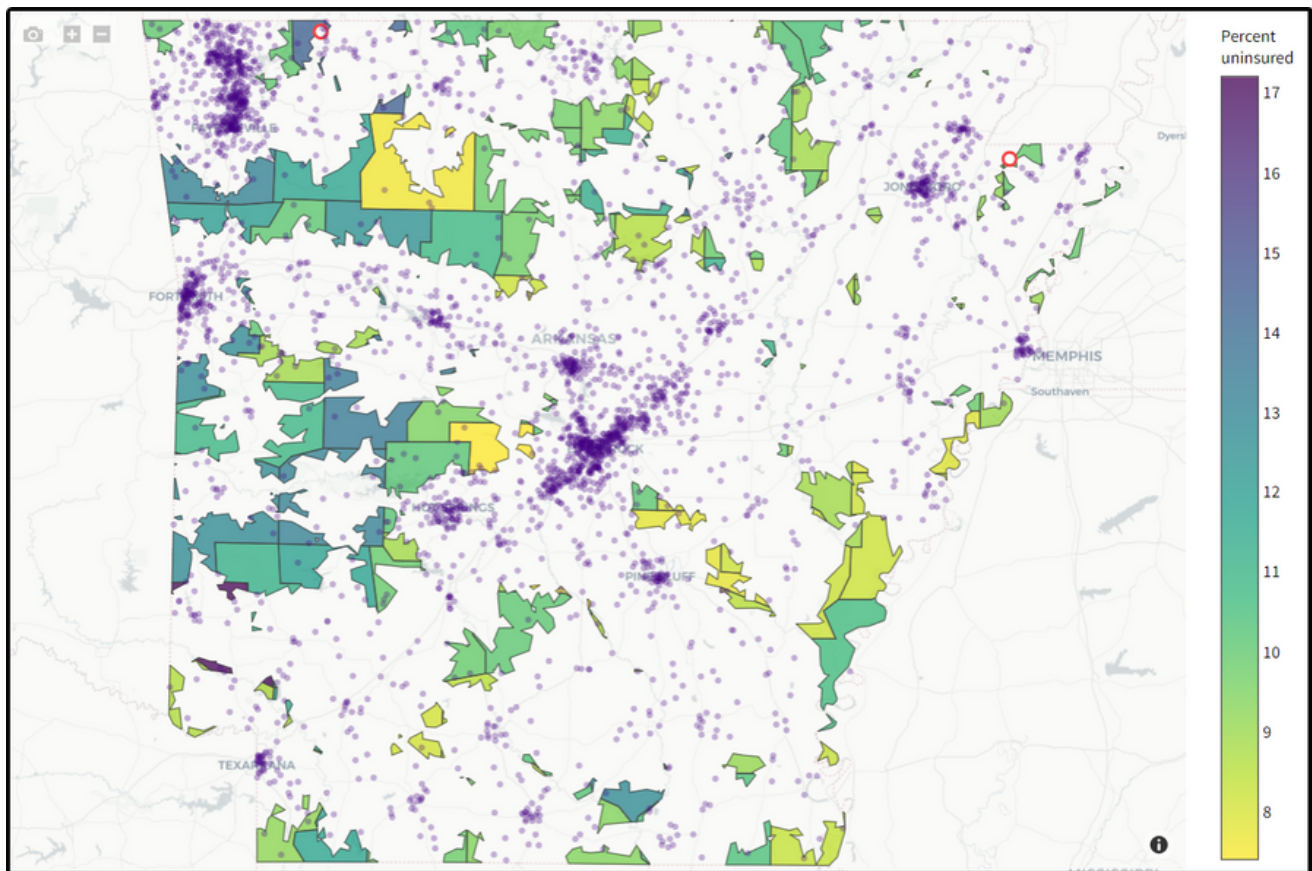
Maps

Details on marked locations can be found on vaccineplanner.org

Pharmacies Not Currently Providing COVID-19 Vaccines to Children Under Five

Data updated April 2023

Total: 2



Data taken from vaccineplanner.org.

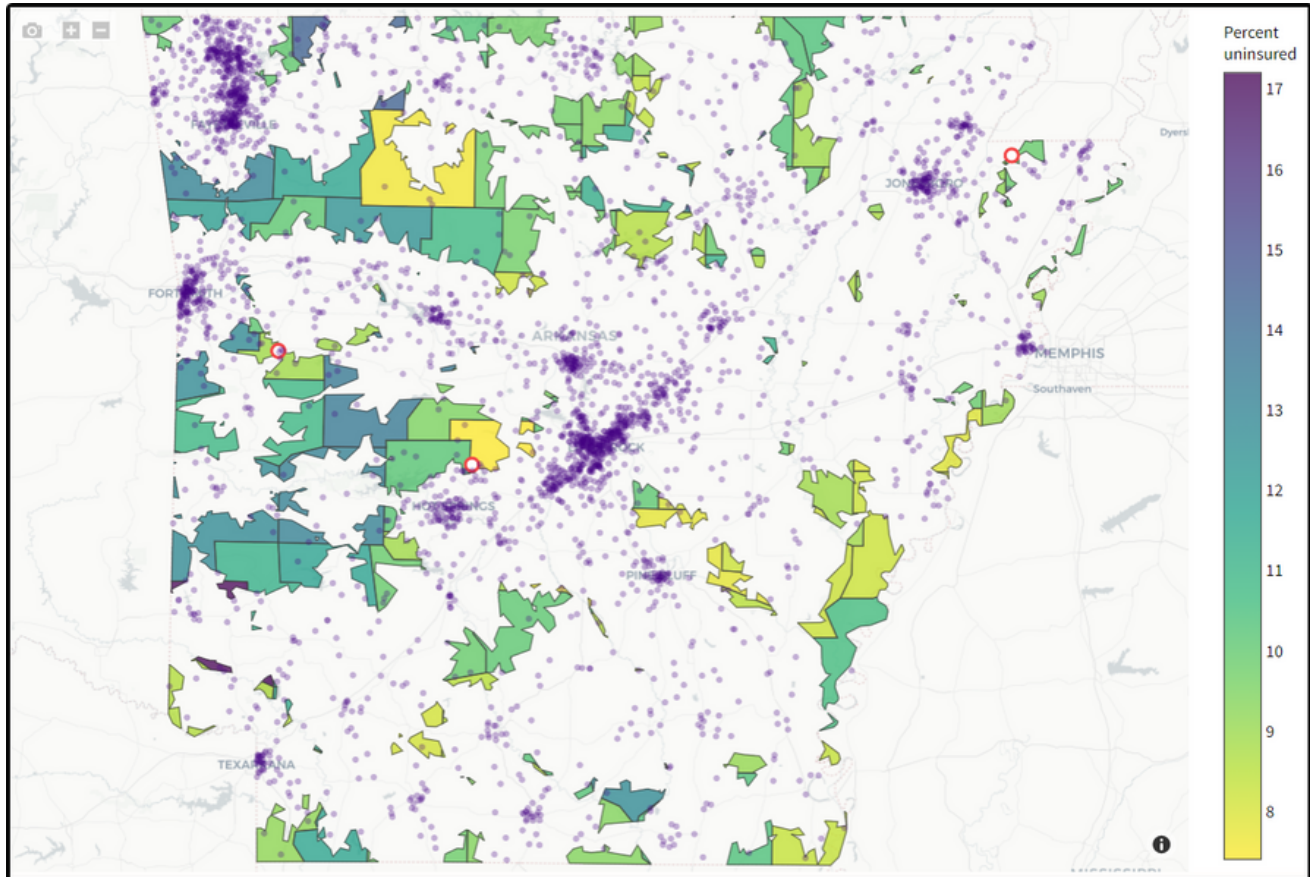
Data parameters:

- Children between the ages of six months and five years
- Those living in low, moderate, or high social vulnerability (based on the [CDC's Social Vulnerability Index \(SVI\)](#))
- Shaded by percent without health insurance
- Drive time of 30 minutes or more to the nearest COVID-19 vaccination site
- Purple dots each represent a population of 1,000 people

Pediatric and Family Medicine Practices Not Currently Providing COVID-19 Vaccines to Children Under Five

Data updated April 2023

Total: 3



Data taken from vaccineplanner.org.

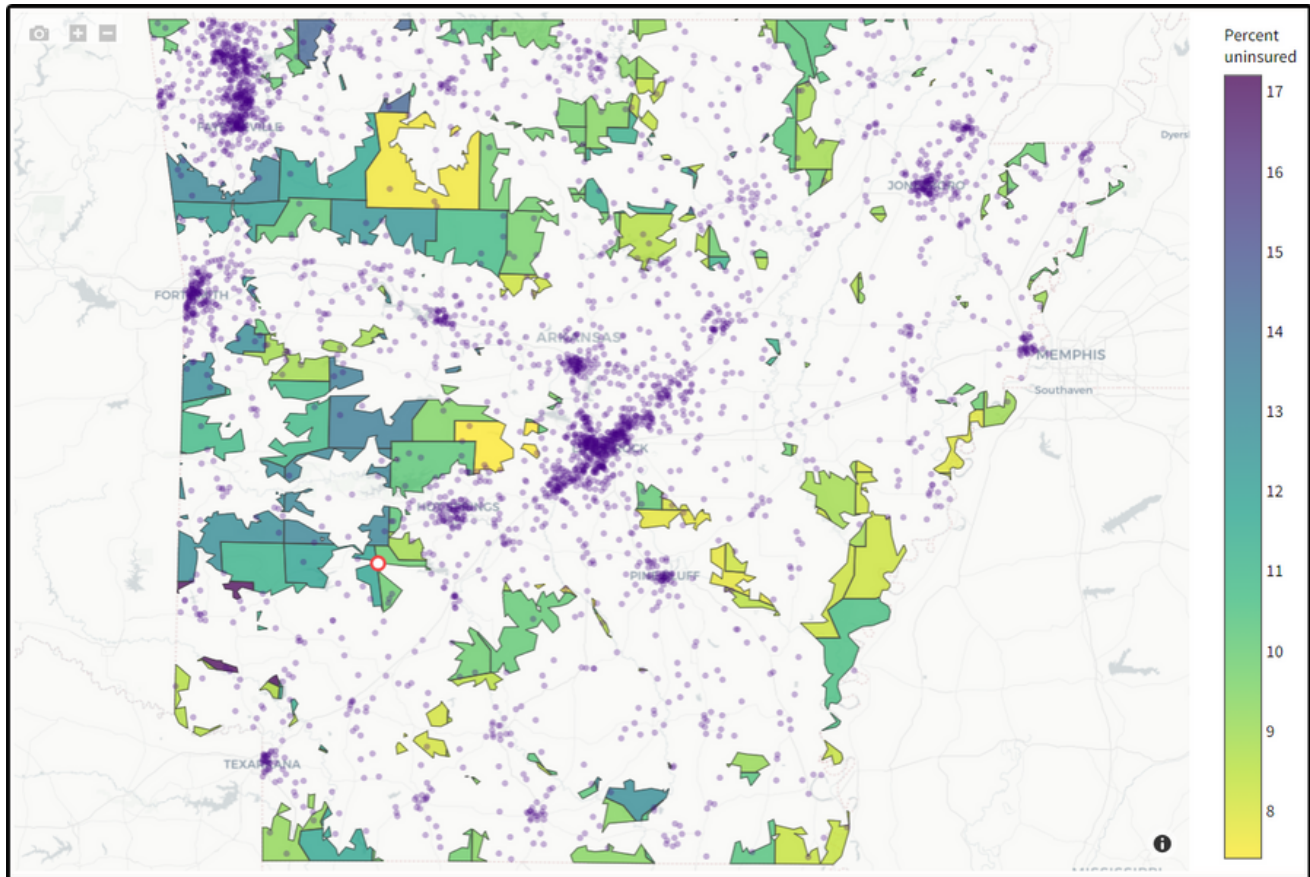
Data parameters:

- Children between the ages of six months and five years
- Those living in low, moderate, or high social vulnerability (based on the [CDC's Social Vulnerability Index \(SVI\)](#))
- Shaded by percent without health insurance
- Drive time of 30 minutes or more to the nearest COVID-19 vaccination site
- Purple dots each represent a population of 1,000 people

Federally Qualified Health Practices Not Currently Providing COVID-19 Vaccines to Children Under Five

Data updated April 2023

Total: 1



Data taken from vaccineplanner.org.

Data parameters:

- Children between the ages of six months and five years
- Those living in low, moderate, or high social vulnerability (based on the [CDC's Social Vulnerability Index \(SVI\)](#))
- Shaded by percent without health insurance
- Drive time of 30 minutes or more to the nearest COVID-19 vaccination site
- Purple dots each represent a population of 1,000 people