

Table 1 - State Demographics

Data updated April 2023

	Demographic	Total Number	% of Population
Age	Total Population	5,039,877	100%
	Under 5 y/o	290,091	5.8%
	Between 5 and 17 y/o	829,851	16.5%
	Total under 18 y/o	1,119,942	22.2%
Race	American Indian/Alaska Native	16,022	0.3%
	Asian	67,957	1.3%
	Black/African American	1,298,268	25.8%
	Hispanic/Latino	237,434	4.7%
	Native Hawaiian/Pacific Islander	1,661	0.03%
	Other	15,944	0.3%
	White	3,233,247	64.2%
	2+ Races	169,344	3.4%
Other	Total households	1,967,559	100%
	Households with broadband	1,673,170	85.0%
	Persons in poverty	-	16.1%
	Children in households below poverty level	-	22.2%
	Language besides English (>5 y/o)	243,951	5.1%
	Uninsured children (<18 y/o)	47,245	4.2%
	Children on Medicaid (<19 y/o)	524,453	46.8%
	Children with private insurance (<19 y/o)	668,762	59.7%
	Children with a disability (<18 y/o)	52,582	4.7%
	Population per square mile	99.2	-

Age data taken from U.S. Census Bureau - [ACS S0101: Age and Sex](#)

Race data taken from U.S. Census Bureau - [ACS B03002: Hispanic or Latino Origin by Race](#)

Household, language, and disability data taken from U.S. Census Bureau - [ACS DP02: Selected Social Characteristics in the United States](#)

Poverty, uninsured, and other data taken from U.S. Census Bureau - [ACS S0901: Children Characteristics](#), [ACS S2701: Selected Characteristics of Health Insurance Coverage in the United States](#), and [QuickFacts: Alabama](#)

Private insurance and Medicaid data taken from [ACS S2703: Private Health Insurance Coverage by Type and Selected Characteristics](#) and [ACS S2704: Public Health Insurance Coverage by Type and Selected Characteristics](#)

Table 2 - Tribal Nations

Data updated April 2023

	Total Tribes Represented	Total Population
American Indian Tribes	31+	17,523
Alaska Native Tribes	3+	186
Two or more Tribes	-	684
Unspecified Tribes	-	3,268
Total Tribes	34+	21,661*

Note that the above table shows Tribes represented in U.S. Census data. Citing the Alabama Indian Affairs Commission, there is one Tribe that is both federally and state recognized along with eight Tribes that are state recognized. The Alabama Indian Affairs Commission further states that they represent over 38,000 American Indian families living in the state.

*This value may differ slightly from the value in Table 1 due to an expected margin of error

Tribal data taken from U.S. Census Bureau - [ACS B02014: American Indian and Alaska Native Alone for Selected Tribal Groupings](#) and the [Alabama Indian Affairs Council](#)

Table 3 - COVID-19 Vaccination Rates

Data updated April 5, 2023

	% with 1+ dose	% with 2 dose series	% change in 3 weeks
6 mo.-4 y/o	4%	-	1%
5-11 y/o	17%	12%	0%
12-17 y/o	44%	35%	1%

Data taken from [AAP - Children and COVID-19 Vaccination Trends](#)

Table 4 - Pharmacist Authority to Deliver Vaccines Outside of PREP Act

Data updated May 2023

COVID-19: Federal PREP Act allows all pharmacists, pharmacy technicians, and pharmacy interns to administer routine childhood vaccinations and COVID-19 vaccines to all children 3 and older, and the influenza vaccine to those age 19 and older. More info can be found at naspaspa.us/resource/federal-prep-act-actions/

	Influenza	COVID-19
With a patient-specific prescription	Can administer to any age	Can administer to any age
Without a prescription	Can administer to any age	Can administer to any age

Can pharmacy technicians administer vaccinations in Alabama outside of PREP? Yes

Data taken from the [National Alliance of State Pharmacy Associations](#) and the [American Disease Prevention Coalition](#)



Table 5 - School Vaccine Requirements for Kindergarten Enrollment

Data updated May 2023

	DTap	IPV	MMR	Hep A	Hep B	Varicella	PCV	HiB	COVID
Required	✓	✓	✓			✓			

Data taken from vaccines.procon.org, [Alabama Department of Public Health](https://www.adph.gov), and [Baldwin County Public Schools](https://www.baldwin.k12.al.us)

Table 6 - Vaccine Coverage and Exemption Rates Among Children in Kindergarten

Data updated April 2023

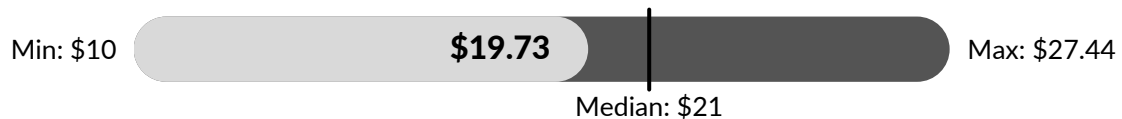
	Alabama	Median	National
Kindergarten Population	60,332	-	3,837,259
Surveyed %	100.0	-	92.2
2 Doses MMR %	≥94.9	92.9	93.5
5 Doses DTaP %	≥94.9	92.0	93.1
4 Doses Polio %	≥94.9	92.7	93.5
2 Doses VAR %	≥94.9	92.6	92.8
Grace Period of Provisional Enrollment %	-	1.9	2.4
Any Exemption %	1.7	2.7	2.6
Percentage point change in any exemption 2020-2021	0.4	0.2	0.4

Data taken from [CDC MMWR Weekly Report](https://www.cdc.gov/mmwr)

Per-Dose Vaccine Administration Fee For Medical Providers

Data updated May 2023

This graph represents the range of administration fees across states. Minimum, maximum, and median calculations taken from the 45 states where data was available.



Data taken from [Alabama Vaccines for Children Provider Manual](https://www.adph.gov)

Other Details

- Is Alabama a Medicaid Expansion state?
 - No
- Is Alabama currently enrolling pharmacies in VFC?
 - Yes
- Are pharmacies recognized as Medicaid providers?
 - Yes
- Number of school-based clinics (per CDC)
 - 15
- Universal VFC jurisdiction?
 - No
- Legislative considerations
 - Bans student COVID-19 vaccine mandates and prohibits inquiry as to vaccination status without written parental consent
 - Any minor who is 14 years of age or older, or has graduated from high school, or is married, or having been married is divorced or is pregnant may give effective consent to any legally authorized medical, dental, health or mental health services for himself or herself, and the consent of no other person shall be necessary.
 - Permits medical and religious exemptions from school-required immunizations
- Logistical considerations
 - Majority of vaccine deserts are in rural areas
- Opportunities
 - School-located vaccination
 - Recruit non-vaccinating providers in vaccine deserts

Sources:

- [KFF - Status of State Medicaid Expansion Decisions: Interactive Map](#)
- [NASHP - States Address School Vaccine Mandates and Mask Mandates](#)
- [SchoolHouse Connection - State Laws on Minor Consent to Routine Medical Care](#)

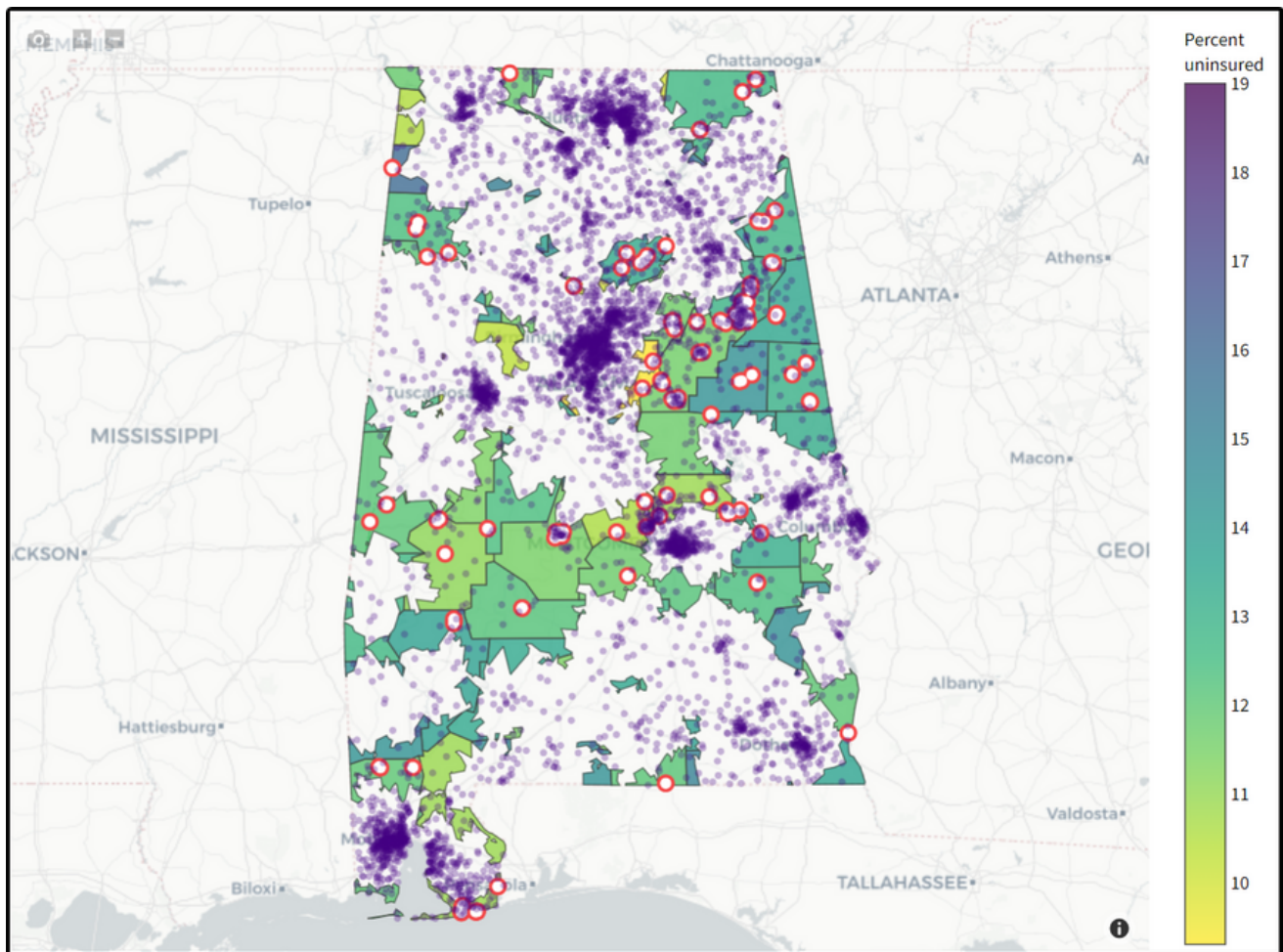
Maps

Details on marked locations can be found on vaccineplanner.org

Pharmacies Not Currently Providing COVID-19 Vaccines to Children Under Five

Data updated April 2023

Total: 154



Data taken from vaccineplanner.org.

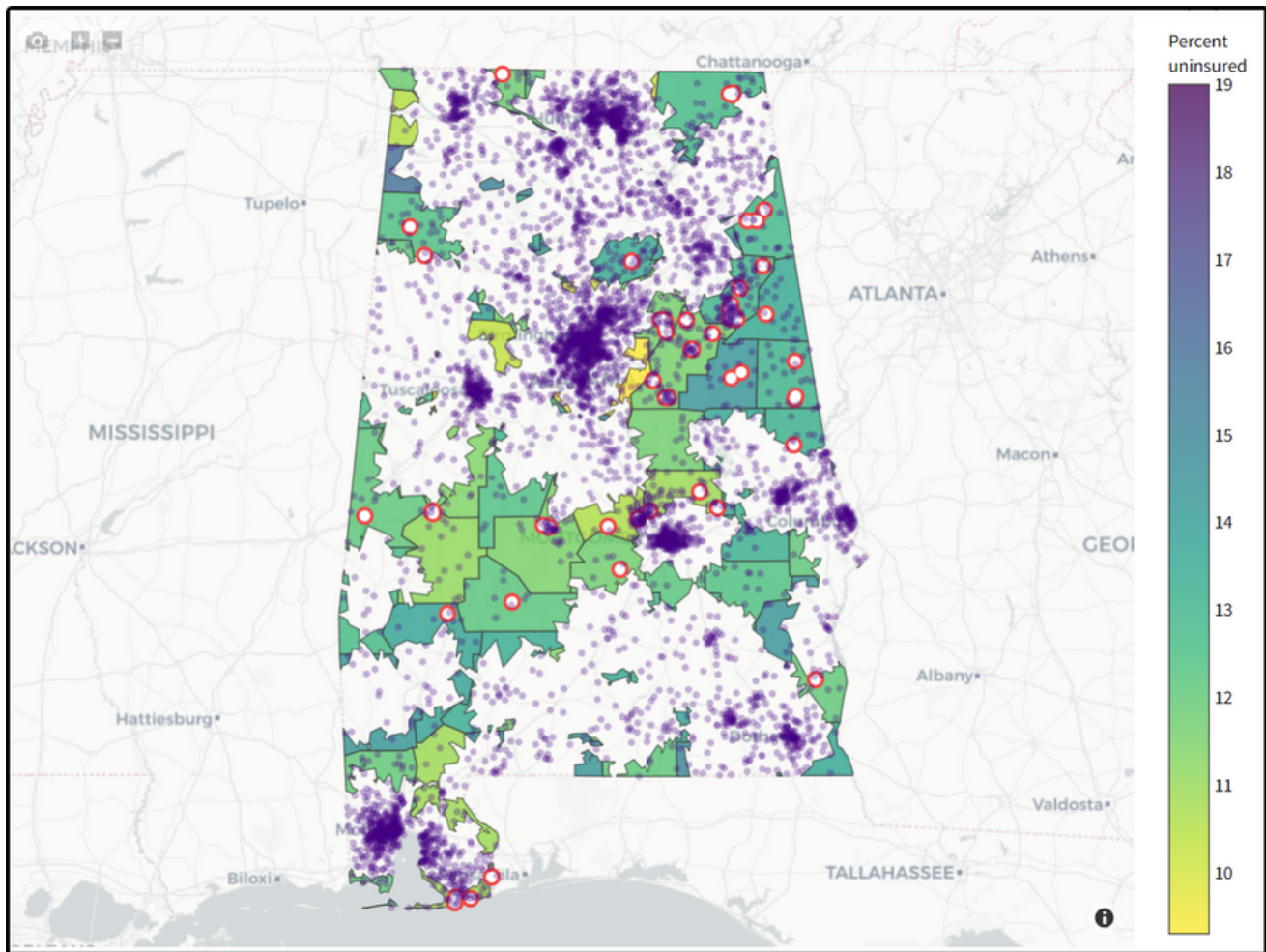
Data parameters:

- Children between the ages of six months and five years
- Those living in low, moderate, or high social vulnerability (based on the [CDC's Social Vulnerability Index \(SVI\)](#))
- Shaded by percent without health insurance
- Drive time of 30 minutes or more to the nearest COVID-19 vaccination site
- Purple dots each represent a population of 1,000 people

Pediatric and Family Medicine Practices Not Currently Providing COVID-19 Vaccines to Children Under Five

Data updated April 2023

Total: 84



Data taken from vaccineplanner.org.

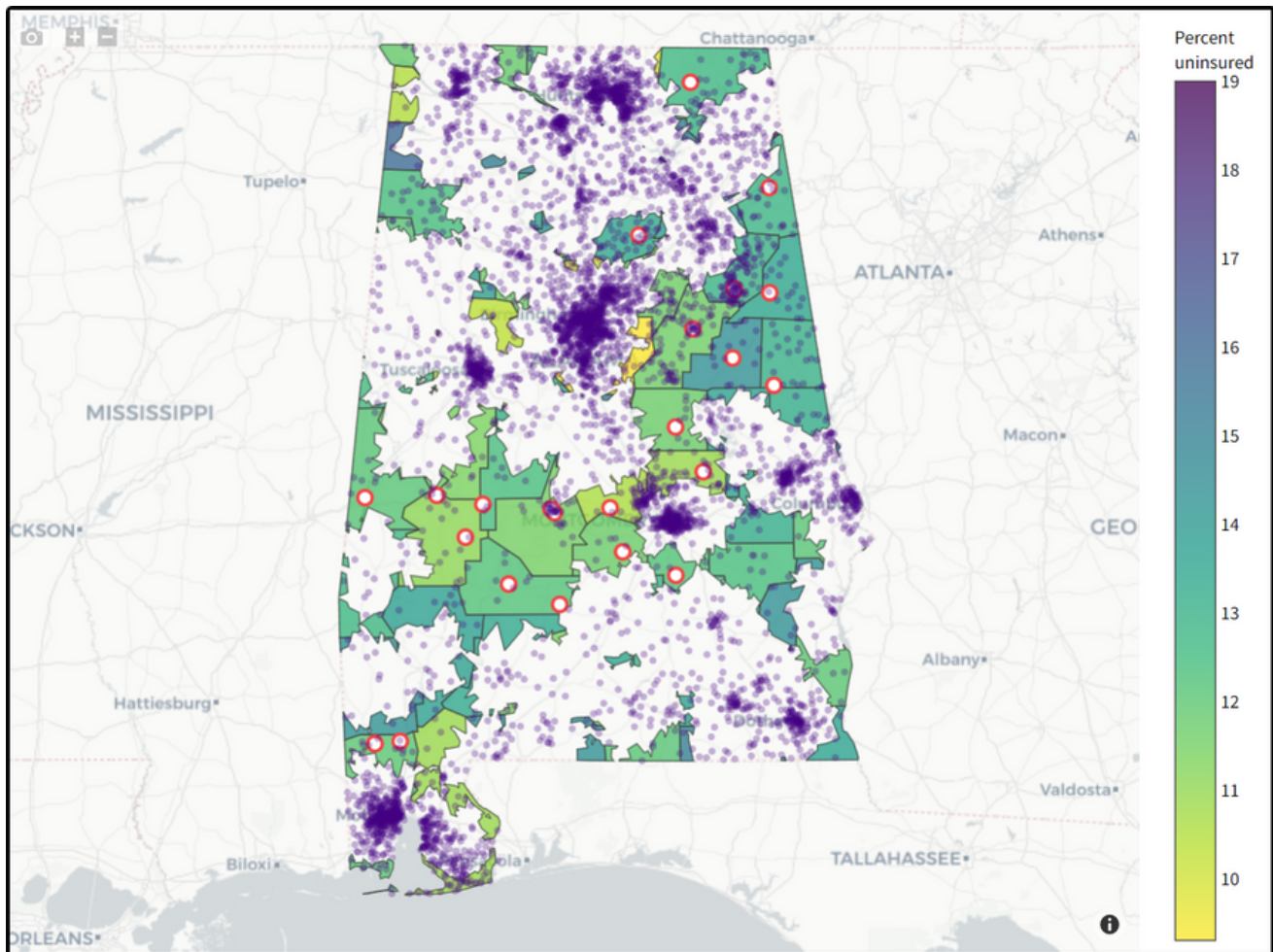
Data parameters:

- Children between the ages of six months and five years
- Those living in low, moderate, or high social vulnerability (based on the [CDC's Social Vulnerability Index \(SVI\)](#))
- Shaded by percent without health insurance
- Drive time of 30 minutes or more to the nearest COVID-19 vaccination site
- Purple dots each represent a population of 1,000 people

Federally Qualified Health Practices Not Currently Providing COVID-19 Vaccines to Children Under Five

Data updated April 2023

Total: 25



Data taken from vaccineplanner.org.

Data parameters:

- Children between the ages of six months and five years
- Those living in low, moderate, or high social vulnerability (based on the [CDC's Social Vulnerability Index \(SVI\)](#))
- Shaded by percent without health insurance
- Drive time of 30 minutes or more to the nearest COVID-19 vaccination site
- Purple dots each represent a population of 1,000 people