



Simple and Reliable Cold Chain Solutions for the Distribution of COVID-19 Vaccines

AEROSAFE SOLUTIONS ON THE INTERNATIONAL SPACE STATION

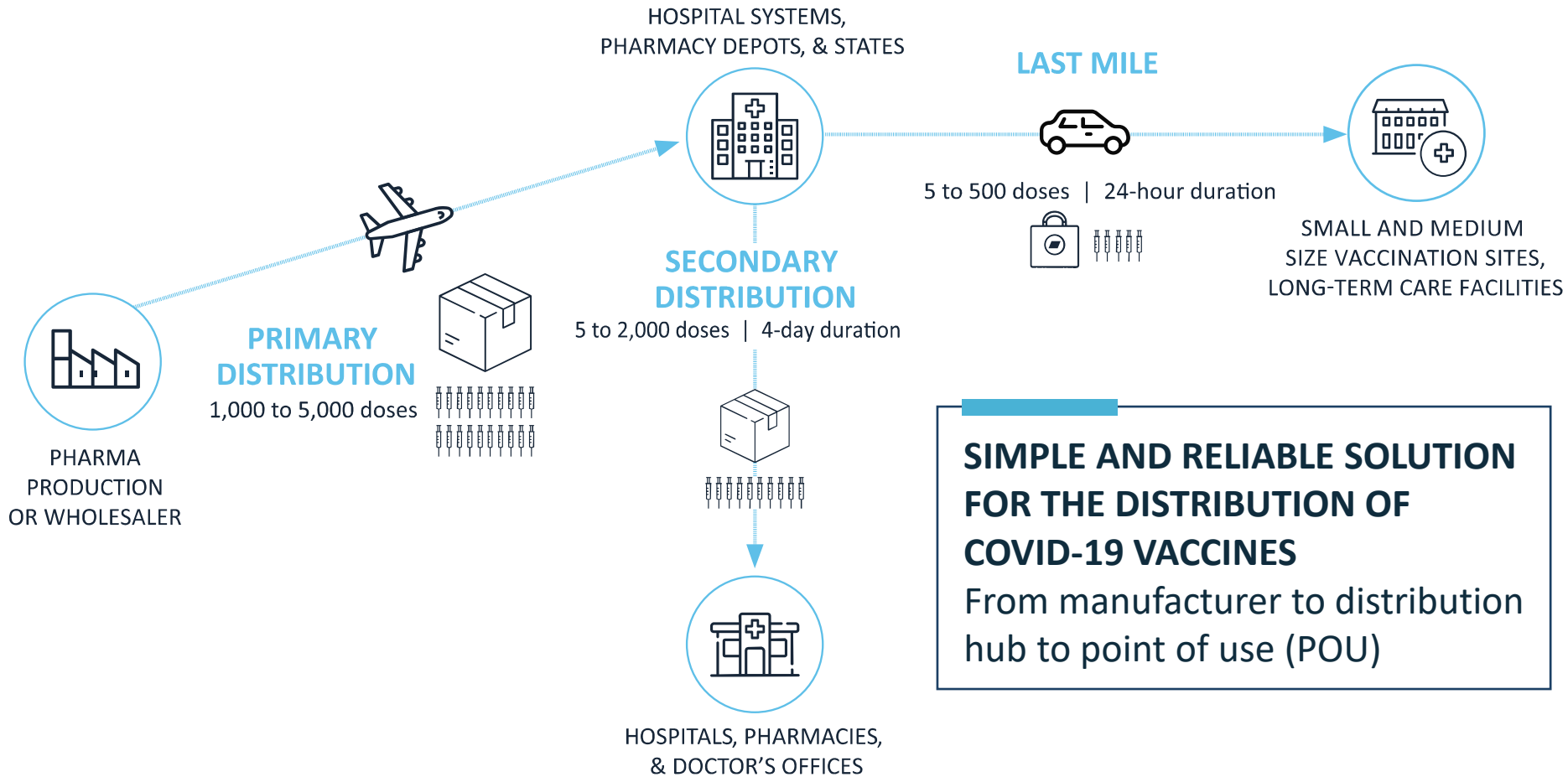
AeroSafe GLOBAL

OUR MISSION

AeroSafe Global's **Cold Chain as a Service** ensures the safe, efficient and sustainable delivery of temperature sensitive biopharmaceuticals.



COVID-19 VACCINE DISTRIBUTION MODELS



SIMPLE AND RELIABLE SOLUTION FOR THE DISTRIBUTION OF COVID-19 VACCINES

From manufacturer to distribution
hub to point of use (POU)

AEROSAFE GLOBAL WORKS SIDE-BY-SIDE WITH CVS AND WALGREENS FOR SAFE DELIVERY OF COVID-19 VACCINES TO LONG-TERM CARE FACILITIES

CHALLENGE

- 1,000s of pharmacies are urgently required to safely store and deliver COVID-19 vaccines at varying temperatures.
- Must develop program to safely deliver COVID-19 vaccines from pharmacies to vaccination sites throughout the United States.
- Pharmacists need a carry case to easily transport vaccines to multiple sites daily.

SOLUTION

- Easy-to-use AeroCase provides 24-hour temperature protection for 500 doses of all types of vaccines.
- The hi-tech carry case is easily 'recharged' nightly, to provide unparalleled repeatable performance.
- Supporting multiple vaccines, the case is 'set' to specific temperatures with the use of advanced thermal plates.

RESULT

- Pharmacies are currently safely providing **thousands** of doses of vaccines to **tens of thousands** of long-term care facilities around the country with ease.

AeroSafe
GLOBAL

"CVS said it will transport COVID19 vaccines in a special reusable cooling container about the size of a briefcase made by Rochester, N.Y.-based AeroSafe Global"

"AeroSafe Global is providing CVS with 4,000 containers, each capable of holding at least 250 doses"

CVS pharmacy

Protected by
AeroSafe
Global

SOURCE:

[wsj.com/articles/covid-19-vaccine-race-turns-deep-freezers-into-a-hot-commodity](https://www.wsj.com/articles/covid-19-vaccine-race-turns-deep-freezers-into-a-hot-commodity)

LAST-MILE DELIVERY TO LONG-TERM CARE FACILITIES

AEROCASE | DISTRIBUTION OF SMALL VACCINE QUANTITIES (5 TO 500 DOSES, 24-HOUR DURATION)



AEROCASE

- Reliable transport and 24-hour storage for temperature-sensitive products
- Durable, washable canvas exterior case
- Convenient handle and strap for easy transport
- Custom embroidery on exterior (company logo)
- High-performing combinations of Vacuum Insulated Panels (VIP), Phase Change Material (PCM), and dry ice prequalified using ISTA temperature profiles for a broad range of temperature needs



Temperature Ranges

-70°C
with Dry Ice

-25 to -15°C
with PCM Plates

2 to 8°C
with PCM Plates

ANY THERAPY, ANY TEMPERATURE, ANY DURATION

DIFFERENTIATED ADVANTAGES | EFFICIENCY

AeroSafe
GLOBAL

EFFICIENCY
ADAPTABLE FOR ALL TEMPERATURES

AeroSafe's easy-to-use solutions accommodate a wide range of temperatures, durations and volumes

Room Temp
CRT | 15 to 25°C



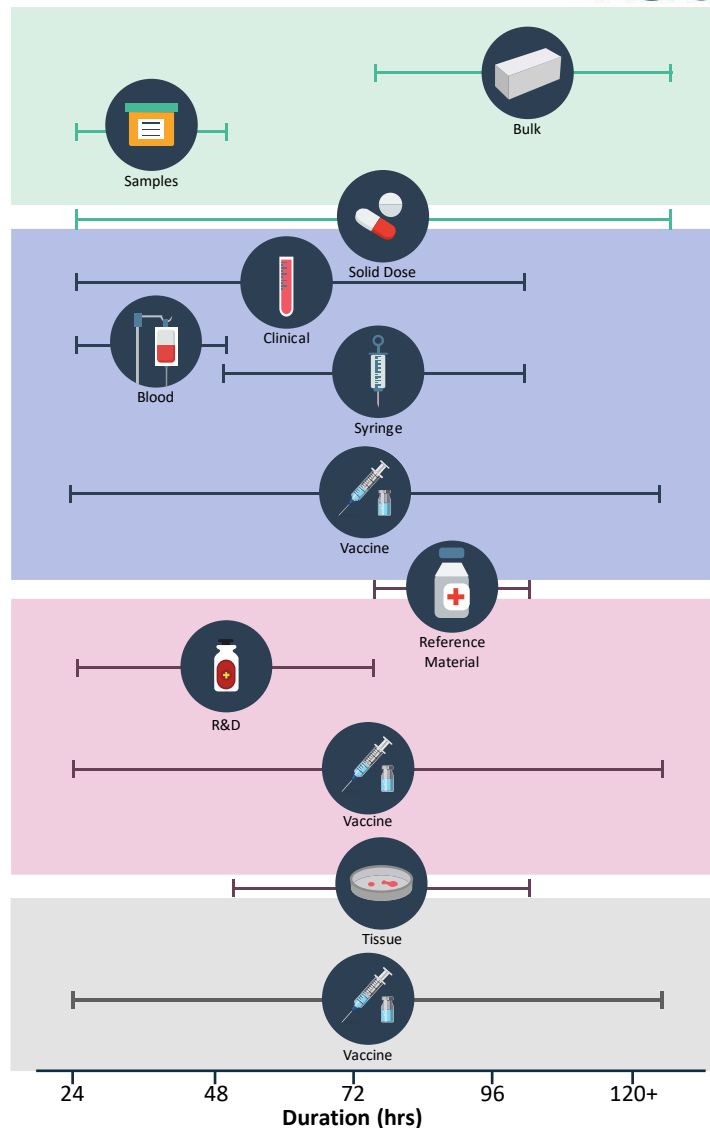
Refrigerated
RF | 2 to 8°C



Frozen
FRZ | -25 to -15°C



Ultra-Frozen
ULTR | ≤-60°C



ANY THERAPY, ANY TEMPERATURE, ANY DURATION

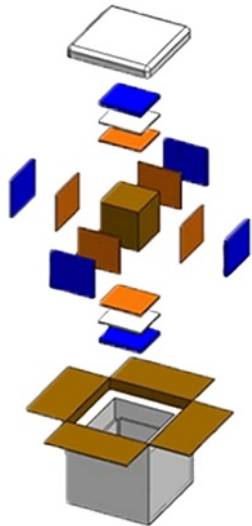
DIFFERENTIATED ADVANTAGES | SIMPLICITY AND FLEXIBILITY

AeroSafe
GLOBAL

SIMPLICITY | REDUCE HUMAN ERROR, LABOR & COSTS

Industry Standard

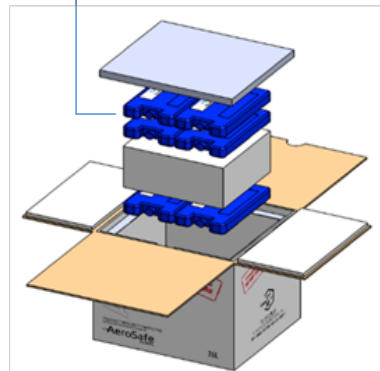
- 14 Components
- 2 Coolant Temperatures
- 4 Different Packout Scenarios



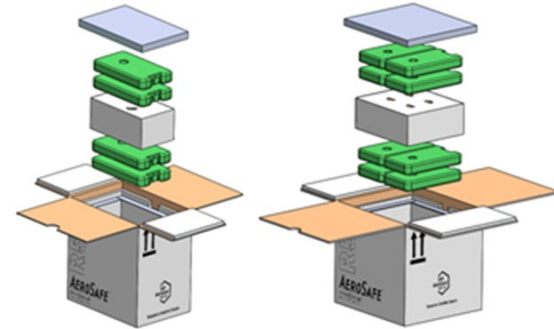
AeroSafe Global

- 3 Components
- 1 Coolant Temperature
- Universal Packout

Single size
PCM plates

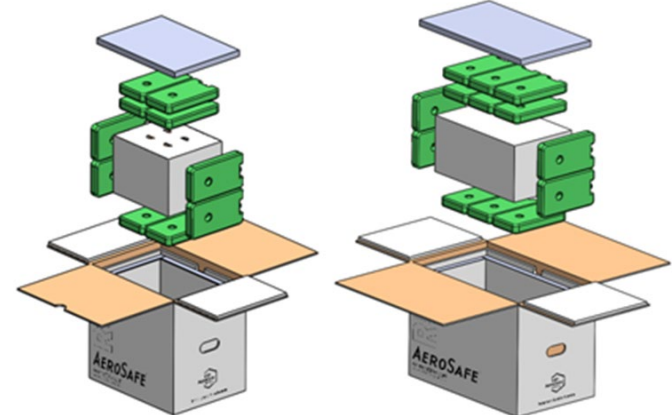


FLEXIBILITY | EXPAND SHIPPING OPTIONS WITH MODULAR DESIGN



Small (13L)

Medium (26L)

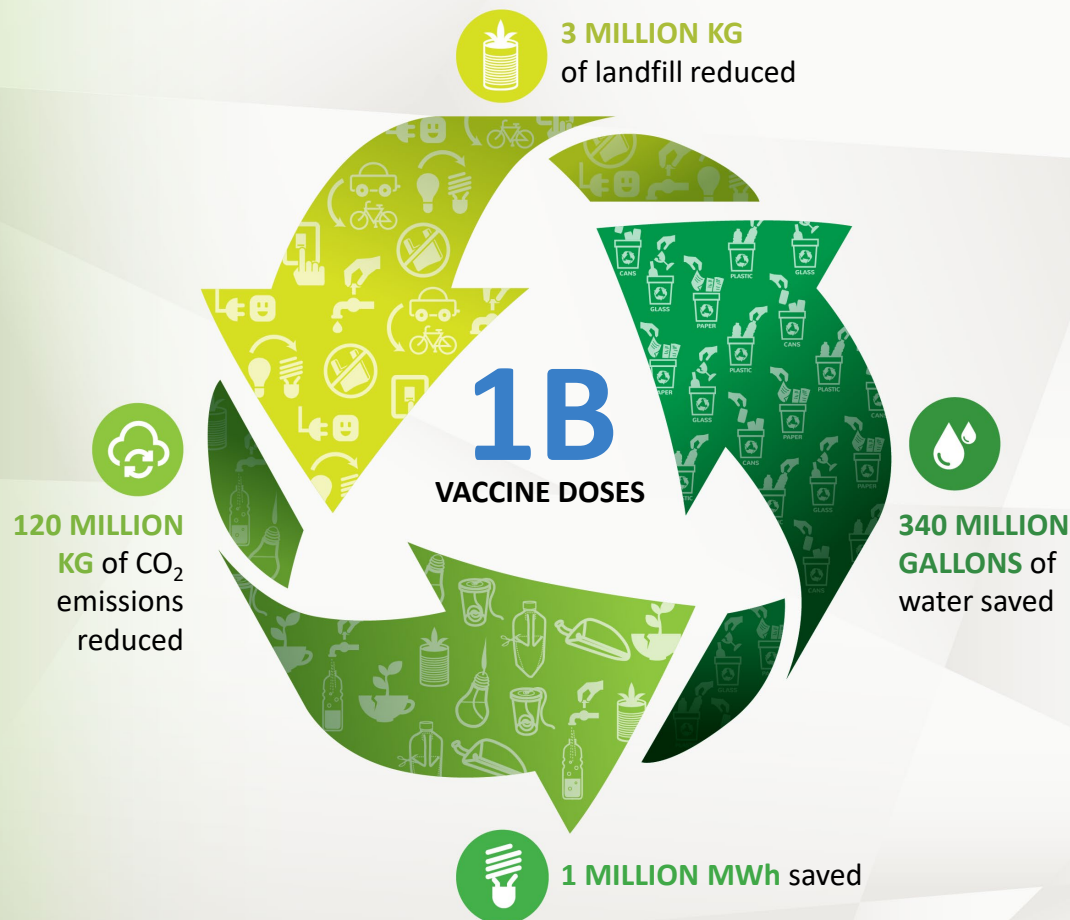


Large (39L)

X-Large (59L)

THE SUSTAINABILITY ADVANTAGE

SAVINGS USING AEROSAFE VS. TYPICAL EPS THERMAL PACKAGING



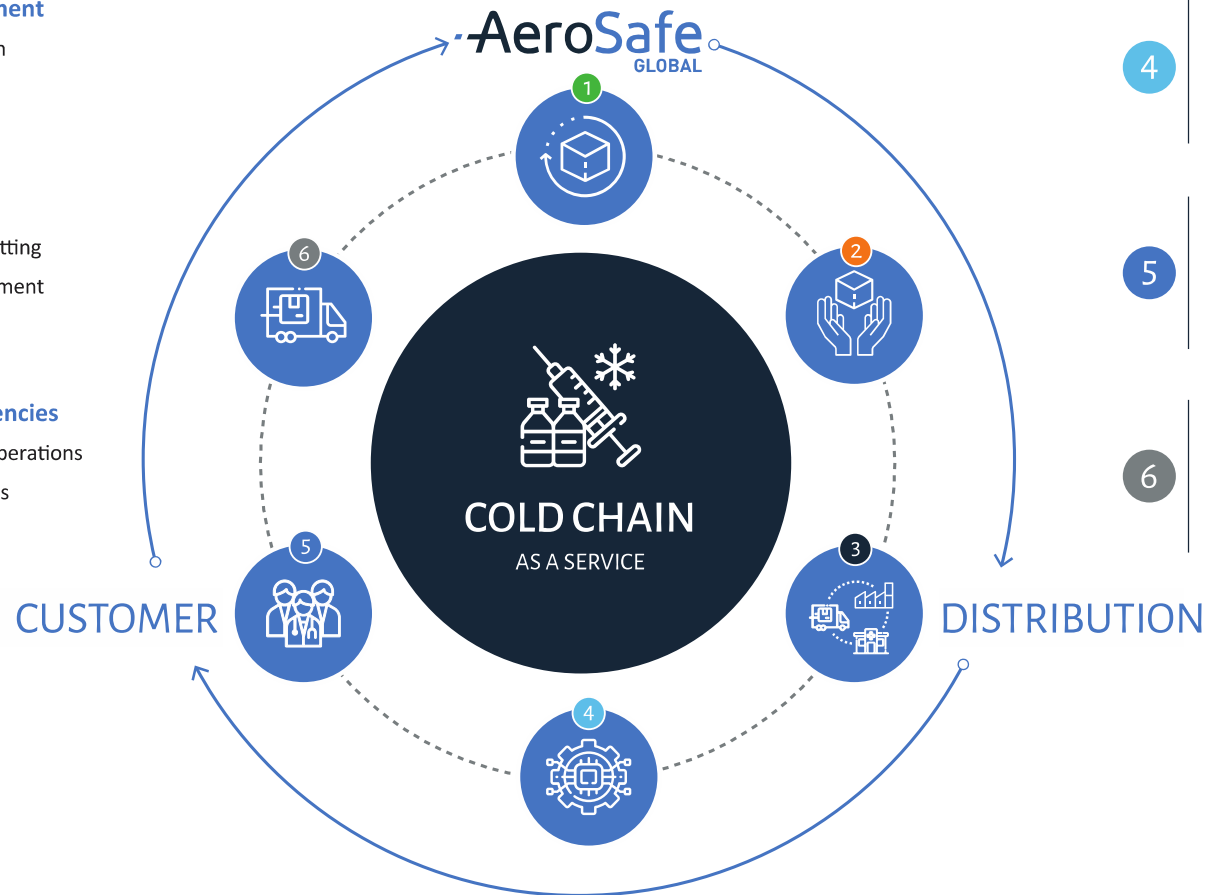
- Pharma produces **55% more GHGs** and waste than the automobile industry*
- About **one-third** of an average landfill's waste is made up of packaging material*
- Every day, **1,400 tons of EPS** is buried into U.S. landfills*
- Hundreds of communities worldwide have banned the commercial use of EPS*

*Source: pharmaceutical-technology.com/comment/big-pharma-pollution-2019/

AEROLOOP REUSE PROGRAM



AEROSAFE COLD CHAIN AS A SERVICE



LEADING THE PHARMA INDUSTRY WITH INNOVATION & SERVICE

AeroSafe
GLOBAL

“Cradle-to-grave solution: AeroSafe deals with ensuring we have everything when and where we need them.”

—Director of Procurement



company playing pivotal role in COVID vaccine delivery

MONEY

Rochester, New York company AeroSafe playing pivotal role in 'last mile' of COVID vaccine delivery

AeroSafe Global in Rochester pivoted seven years ago to a full-service, cold-chain packaging and services operation.

Brian Sharp Rochester Democrat and Chronicle
Published 6:01 a.m. ET Dec. 23, 2020 | Updated 1:14 p.m. ET Dec. 23, 2020

ROCHESTER, N.Y. — Inside a sprawling, nondescript production facility on the west side of this city, dozens of employees are putting in long days and weekends to help end the pandemic.

Their work is essential.

Developing vaccines for COVID-19 has been a herculean task. Getting those millions of vials safely into the hands of hospitals and pharmacies, and out to nursing homes, is another.

AP

Customized solutions

The universe of companies capable of (and thus working on) the tightly controlled, cold-chain shipping necessary for the vaccines is “very, very small,” he said. AeroSafe is sole contractor making the units for Walgreens and CVS, for example.

Other local partners include IEC Electronics, Fieldtex, CY Plastics and Casual Fridays. Irish Propane is also in the mix, providing propane pellets.



Bloomberg
Opinion

Vaccine Supply Chains Bend But Don't Break

There may be hiccups and snags along the way, but corporate America has proved itself ready to respond to the challenges of the moment.

By [Brooks Sutterland](#)
December 4, 2020, 3:17 PM EST



Ultra-cold storage requirements and dry-ice needs are among the challenges of distributing Covid-19 vaccines. Photographer: Saul Loeb/AFP via Getty Images

THE WALL STREET JOURNAL
WSJ

CVS, Walgreens Gear Up to Deliver Covid-19 Vaccines to Nursing Homes

Effort will need to navigate rollout details that may vary by state and potential reluctance by staffers to get the novel shots

By [Jared S. Hopkins](#) and [Anna Wilde Mathews](#)
Dec. 2, 2020 10:00 am ET

CVS Health Corp. and Walgreens Boots Alliance Inc. are preparing to bring Covid-19 shots to long-term care facilities, but the effort will need to navigate rollout details that may vary by state, vaccines that require more than one dose and potential reluctance by staffers to get the novel shots.

An advisory panel to the U.S. government recommended on Tuesday that residents of long-term care facilities be included with doctors, nurses and health-care workers to be first in line for vaccines. States, which will ultimately decide how to allocate Covid-19 vaccine supplies, don't need to follow the guidelines, though they usually do. But logistics and other aspects of the effort may differ among states, even among those that broadly accept the panel's conclusions.

STAT+

On the ground, the pledge to vaccinate 20 million against Covid-19 in December seems unrealistic

By [Olivia Goldhill](#) @OliviaGoldhill

December 7, 2020



A nurse assists with a procedure on a Covid-19 patient in the ICU at Regional Medical Center in San Jose, Calif. Justin Sullivan/Getty Images

WIRED

The Last, 'Ultra-Cold' Mile for Covid-19 Vaccines

Two vaccines are nearly here—but their unusual storage requirements could deprive the rural areas that need them most. A tech fix might be coming.

“We chose AeroSafe as much for who they are as for what they can do.”

—Director of N.A. Operations

[AEROSAFEGLOBAL.COM/NEWS](https://aerosafeglobal.com/news)